

**Cllr Claire Sully & Cllr Alex Wiltshire**  
**SOMERSET COUNCIL REPORT**  
**Mendip South, April, 2023**

This month's report is focusing on key information about Somerset Council, following the launch of Somerset Council April 1<sup>st</sup>, 2023.

**Access to Somerset Council:**

Somerset Council are providing two face-to-face models across Somerset as part of Somerset Council.



Customer Service Points - Customers will be able to get information, advice and support by visiting us in person at one of our Customer Service Points.

Customer Access Points - these will provide assisted digital access to our online services and virtual meetings.

## Somerset Council: Planning

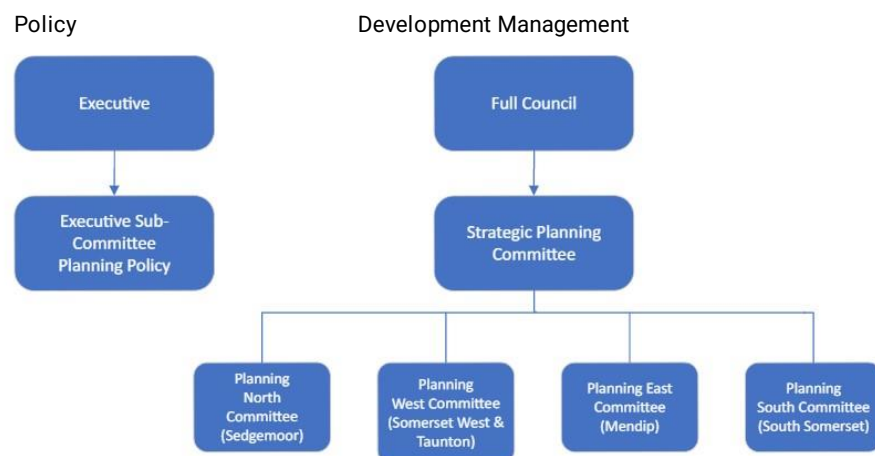
Somerset Council's Constitution was approved at Full Council on 22 February 2023 – available on our Somerset Council website: <https://www.somerset.gov.uk/council-and-democracy/constitution/>. This includes the changes to our planning system.

All 110 Councillors at Somerset Council are receiving planning training.

Planning Guidance for Parish Councils will be circulated as soon as possible with the intention to provide additional training.

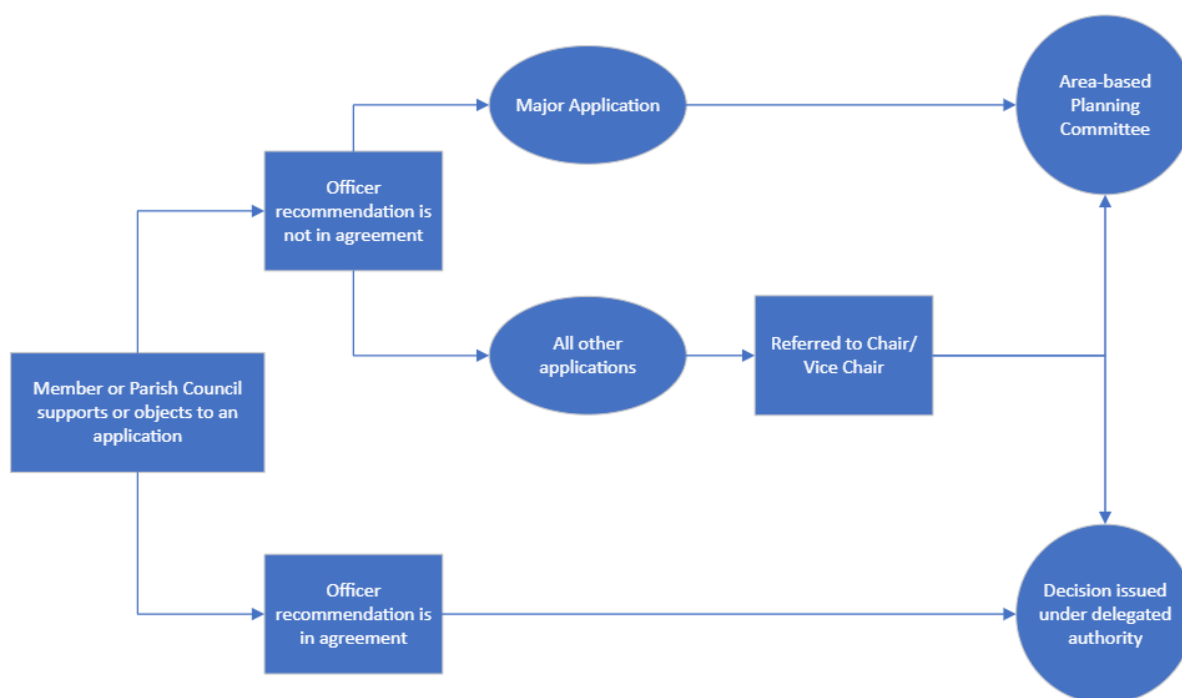
Statement of community involvement can be found here: <https://www.somerset.gov.uk/planning-buildings-and-land/statement-of-community-involvement/>

## Committee Structure



Together we are delivering your

**New Somerset Council**



### When an application is referred to committee

Parish/Town/City Councils, Divisional Members, Contributors (objectors/supporters) and the Agent/Applicant will receive a notification email confirming:

- The application details
- The date, time and location of the meeting
- Instructions on how you can register to speak or to attend
- To register to speak you will need to notify Democratic Services by 12 noon the working day before the Committee
- Hybrid Committees– you can attend and/or speak on an application in person or virtually
- A link to a Planning Committee Guidance Note

### Public Speaking at planning committees

Order of Speaking:

- Members of the public, or their representatives, objecting to or in support of the application;
- Town or Parish Councils;
- Members of the Council (non-Planning Committee members);
- The applicant or agent

Members of the public in Opposition (3 mins each, up to 5 speakers)	Members of the public in Support (3 mins each, up to 5 speakers)	Parish /Town/City Council	Applicant / Agent	Member(s) (non Planning Committee Members)
15 mins shared	15 mins shared	3 mins each	3 mins shared	3 mins each

**Reminder - Somerset Council Services:** On April 1st, Somerset Council assumed responsibility for all council services in the county.

Housing, Social Care, Planning, Highways, Education, Public Health, Libraries, Recycling and much more besides – will all come under Somerset Council.

This has been a mammoth task for Somerset County Council, working with District Councils, leadership, officers and members, since Unitary Councillors were elected in May 2023.

**Single Point of information for Somerset Council:**

Call: 0300 123 2224, Phone lines will be open 8.30am to 5pm Monday to Friday.

A Single Somerset Website will be available at [www.somerset.gov.uk](http://www.somerset.gov.uk)

Useful info:

**Local Community Networks (LCNs)**

E-mail enquiries for LCNs: [lcns@somerset.gov.uk](mailto:lcns@somerset.gov.uk)

**LCNS in Mendip South**

<b>Avalon and Poldens</b>	<b>Shepton Mallet</b>	<b>Frome</b>	<b>Wincanton</b>
Ashcott	Batcombe	Berkley	
Baltonsborough	Chilcompton	Buckland Dinham Alford	
Barton St. David	Coleford	Frome TC	Ansford
Bawdrip	Cranmore	Great Elm CP	Babcary
Burtle	Crocombe	Hemington	Bratton Seymour
Butleigh	Ditcheat	Lullington	Brewham
Catcott	Doultong	Mells	Bruton
Chilton Polden	Downhead	Norton St. Philip	Castle Cary
Cossington	East Pennard	Nunney	Charlton Horethorne
Edington	Evercreech	Rode	Charlton Musgrove
Glastonbury	Holcombe	Selwood	Compton Pauncefoot
Greinton	Kilmersdon	Tellisford	Corton Denham
Keinton Mandeville	Leigh-on-Mendip	Trudoxhill	Cucklington

Kingweston	Milton Clevedon	Upton Noble	Henstridge
Meare & Westhay	Pilton	Wanstrow	Holton
Moorlinch	Pylle	Whatley	Horsington
Shapwick	Shepton Mallet	Witham Friary	Lamyatt
Sharpham	Stoke St Michael		Lovington
Stawell	Ston Easton		Lydford-on-Fosse
Street	Stratton on the Fosse		Maperton
Walton			Milborne Port
West Bradley			North Barrow
West Pennard			North Cadbury
			North Cheriton
			Pen Selwood
			Pitcombe
			Queen Camel
			Shepton Montague
			South Barrow
			South Cadbury and Sutton
			Montis
			Sparkford
			Stoke Trister
			Wincanton
			Yarlington

## Useful Links

*Live travel information*

<https://www.travelsomerset.co.uk/>

*Potholes and road damage*

Somerset Council repair potholes and other road defects, and maintain our roads, for the safe access of all road users:

<https://www.somerset.gov.uk/roads-travel-and-parking/potholes-and-road-damage/>

*Report a problem with a street light*

We maintain and repair street lights to national standards to provide safe access to all road users:

<https://www.somerset.gov.uk/roads-travel-and-parking/report-a-problem-with-a-street-light/>

*Roads, travel and parking, road signs, markings and lighting*

Includes information about non-illuminated bollards, pedestrian crossings, requesting a village nameplate and how to apply for a new road sign Speed limits: <https://www.somerset.gov.uk/roads-travel-and-parking/road-signs-bollards-and-road-markings/>

*Speed limits*

Request information about new or existing traffic calming measures:

<https://www.somerset.gov.uk/roads-travel-and-parking/speed-limits/>

*Traffic lights*

We maintain over 200 traffic light locations throughout the county

<https://www.somerset.gov.uk/roads-travel-and-parking/traffic-lights/>

*Street and roadworks*

We maintain the roads and pavements that are managed at public expense in Somerset

<https://www.somerset.gov.uk/roads-travel-and-parking/street-and-roadworks/>

Contact details for Claire and Alex:

[Claire.sully@somerset.gov.uk](mailto:Claire.sully@somerset.gov.uk)

[Alex.Wiltshire@Somerset.gov.uk](mailto:Alex.Wiltshire@Somerset.gov.uk)