

Evercreech and District Information Sheet

£1.25 but free to
local residents.

No: 82
May 2021

With the gradual easing out of lockdown, local events are once more in plan, and groups and societies are starting to meet again. There is a diary in the centre of the magazine, which gives details of some of the main events this summer. Of course, all of these arrangements are subject to change but let's hope we get to enjoy some of the fun events – from the re-opening of the Village Hall to the Evercreech Annual Village Show!

We are grateful to our contributors and advertisers and are glad to have worked with them to produce the 82nd edition, and to our volunteers for helping with delivery. We are currently a very small team and would love some more helpers! If you would like to be involved in producing EDIS, can spare time twice a year and have basic IT skills, please ring us on 01749 831069 to find out more.

If you run a club, group, scheme or event that is not mentioned here, or provide an important service and would like more residents to know about it, please email: edisinfo1@gmail.com or phone **01749 831069**

Local Businesses – would you like to advertise in these pages, which are delivered to over 1,000 households? To find out more about advertising options please email: edisads1@gmail.com

ch✓

City &
Guilds

IPAF

Dulux

fsb⁰⁸
Experts in Business

CARPENTRY - PAINTING - DECORATING - TILING
MAINTENANCE - RENOVATIONS - CHERRY PICKER HIRE

(TEL) 07703 976707

(E-MAIL) info@ch-maintenance.net

(WEB) www.ch-maintenance.net



Quality kitchens at prices to suit everyone's tastes and budgets



creative
KITCHENS & BEDROOMS

t: 01761 411499 m: 07725 962541
e: info@creativekitchensandbedrooms.com
www.creativekitchensandbedrooms.com



FINCH RENOVATIONS L^{TD}

GENERAL BUILDER

All aspects of General Building Undertaken



Extensions

Renovations

Kitchen Fitting



All Maintenance and General Repairs

For a Competitive Free Quote

Telephone 07966 229323

martin@finchrenovationsltd.co.uk

MOT BAY OPEN AT

EVERCREECH MOTOR SERVICES

Unit 19, Leighton Lane Industrial Estate, Evercreech BA4 6LQ



We also:

Supply and fit tyres and exhausts
Full diagnostics
Laser 4 wheel alignments (tracking)

All vehicle servicing and repairs
Air conditioning
Welding

Courtesy cars available

Collection and delivery of vehicles from home or work within 5 mile radius

Tel: 01749 830348

GREENFIELD CAFE
at The Mendip School
OPEN - 8:30am - 3:30pm Mon - Fri

We are open to the public, serving delicious freshly cooked food from 8:30am to 3:30pm week days term time. Our training café at The Mendip School helps our students to become independent and build vocational skills. Any money that we make goes back into funding the brilliant facilities in our school.

Pop In for a coffee, a hearty meal or to take home one of our home-cooked ready meals for your freezer!

Edmund Rack Road, Prestleigh, BA4 4FZ
Tel: 01749 838040



BA4 6DW

Farm fresh pasteurised whole milk
A selection of yummy local produce
Make your own milkshakes!
Self-operated vending machines
Coins and contactless payment
f Rodmore Farm's Real Milk



WINDOWS, DOORS & CONSERVATORIES



CALL 01749 860 088

or visit our showroom In-Store at Haskins, Shepton Mallet, BA4 5AX

www.valleyhomeimprovements.co.uk





The Village Hall Welcomes You Back

Saturday July 3rd 2021

Tea Party 2.00 to 5.00pm

Come and celebrate the Evercreech community spirit that helped us through the last 15 months with free tea and cake and remember what a great place and space we share.

Film Show 7.00pm

Evercreech Films will be showing a fun film for free with the new surround sound system fully operational and the Village Hall offering a free drink and refreshments for each person.

Pre-booking is essential, so see the Village Hall write up here in EDIS for Evercreech Films' contact details when the film is announced.

We look forward to seeing you there.



FOR ALL YOUR CAR AND COMMERCIAL NEEDS!

**Servicing on all makes • MOT's 4,5 & 7 • Full repair facilities
Diagnostic • Body work • Tyres • Air con • Commercial service & inspection
Coded welders • Pressure testing • Chassis/Cab jig**

Part of the Trust My Garage Scheme!

Free Loan Car service - Car Sales & Part exchange

For all enquiries and bookings, please call our service team on 01749 813655

"Any motor concerns, drop in for a coffee and chat"

Station Yard Station Road Bruton Somerset BA10 0NL
info@westendgaragebruton.com www.westendgaragebruton.com

SOMERSET HIRE SERVICES



PLANT HIRE * TOOL HIRE * SALES * REPAIRS



**Find us at Unit 5 Evercreech Junction
01749 860199**



Longhill
Accounting Ltd

- *Tax & Accountancy
- *Personal & Business Tax Returns
- *Statutory Accounts & Returns
- *Business Tax Planning

Longhill Accounting Ltd offers professional, personal affordable
tax & accounting solutions tailored to your needs.

Start-ups a speciality!

Please contact us to discuss how we can tailor
a package to suit your business

1 Longhill Lodge, Ditchat, Shepton Mallet, Somerset BA4 6QR

Telephone 01749 860001 or 07989 354957

Email chris@longhillaccounting.co.uk

Website www.longhillaccounting.co.uk

INDEX

Animals & Pets

| | |
|---------------------------------|----|
| Bees | 39 |
| Bridleways & Byways | 41 |
| Cats | 31 |
| The Cinnamon Trust | 31 |
| Dogs - Environmental Protection | 12 |
| Riding for the Disabled | 41 |

Community & Services

| | |
|---------------------------------------|---------|
| Banks | 4 |
| Carymoor Environmental Trust | 37 |
| Children's Society | 24 |
| Churches | 20 - 23 |
| Citizen's Advice Mendip | 13 |
| Community Council (CCS) | 11 |
| Credit Union | 14 |
| Diary of events | 26 |
| Evercreech Relief in Need | 23 |
| Food Saving Project | 43 |
| Food Bank | 11 |
| Freegle | 16 |
| Gartons Mead | 24 |
| Items to Borrow | 12 |
| Library | 15 |
| Mendip Councillor | 45 |
| Neighbourhood Watch | 12 |
| Noise Nuisance | 13 |
| Parish Council | 18, 44 |
| Police | 12 |
| Political Parties (local) | 19 |
| Post Office Collection Times | 3 |
| Refuse Collection/Recycling | 16, 17 |
| Registrar (births, deaths, marriages) | 14 |
| RNLI | 27 |
| Safe Families | 11 |
| Shepton Mallet Carnival | 24 |
| Shepton Mallet Market | 18 |
| Shops in Evercreech, Opening Hours | 18 |
| Street Lighting | 13 |
| Village Hall | 46 |
| Water Leaks | 13 |
| Wilf's Wood | 30 |

Education and Young People

| | |
|--------------------------------|-------|
| Arthur Allen Education Trust | 34 |
| Evercreatures (baby & toddler) | 38 |
| Evercreech Explorers | 38 |
| Guides, Brownies & Rainbows | 38 |
| Little Fishes | 38 |
| Schools - Primary & Secondary | 32-34 |
| Scouts, Cubs & Beavers | 38 |
| Youth Club | 38 |

Fitness & Sports

| | |
|-------------------|----|
| Badminton | 40 |
| Caryford Fitness | 37 |
| Football | 40 |
| Rounders | 40 |
| Short Mat Bowling | 40 |
| Sports Club | 40 |
| Tai Chi | 42 |
| Walking Group | 29 |

Health and support

| | |
|--------------------------------------|----------|
| Age UK Somerset | 9 |
| Alcoholics Anonymous | 9 |
| Air Ambulance | 17 |
| Alzheimer's Society | 8 |
| Arthritis Research UK | 9 |
| Bereavement Services | 9 |
| Blood Donors | 8 |
| Defibrillator | 5 |
| Doctor's Surgeries and related info. | 5, 6 |
| Dorothy House | 10 |
| Drug & Alcohol Service | 9 |
| Home First Plus | 10 |
| Local & Community Hospitals | 7 |
| NHS 111 | 6 |
| National Childbirth Trust | 8 |
| Nurses | 6 |
| Pluss | 18 |
| Red Cross | 10 |
| Samaritans | 13 |
| Somerset Community Meals | 14 |
| Victim Support | 8 |

Hobbies & Groups

| | |
|--------------------------|-------|
| Allotments | 25 |
| The Arts Society | 36 |
| Book Clubs | 15 |
| Creative Writing | 15 |
| Drama & Film Groups | 29,30 |
| Drifters Model Boat Club | 42 |
| Evercreech in Bloom | 46 |
| Flower Club | 25 |
| Friendship Club | 27 |
| History Society | 35 |
| Mid Somerset Show | 41 |
| Project Linus | 39 |
| Royal British Legion | 28 |
| Show Society | 27 |
| Singing | 42,43 |
| The Old Stores Studio | 24 |
| U3A | 34 |
| Women's Institute | 25 |

Travel

| | |
|---------------------------------------|--------|
| Air Travel | 4 |
| Bus & Coach Services (inc. hospitals) | 1-4, 7 |
| Greenway/Strawberry Line | 3 |
| Mendip Community Transport | 3 |
| RUH Park & Ride | 7 |
| Trains | 4 |
| Travelling in Somerset | 3 |

All adverts and information are taken in good faith; we take no responsibility for the accuracy or reliability of such information.

Articles and updates may be edited.

It can cost as little as £3 to advertise in the Evercreech and District Information Sheet. If you would like to advertise in November 2021, please contact one of us – the deadline for both information and adverts is 13 September 2021.



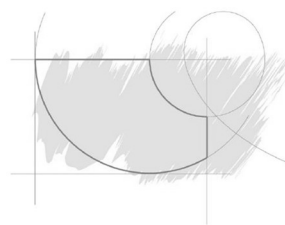
Jo Gregory
MSSCh MBChA
HCPC Registered
Chiropodist

All aspects of chiropody and foot care undertaken

Treatment in the comfort of your own home

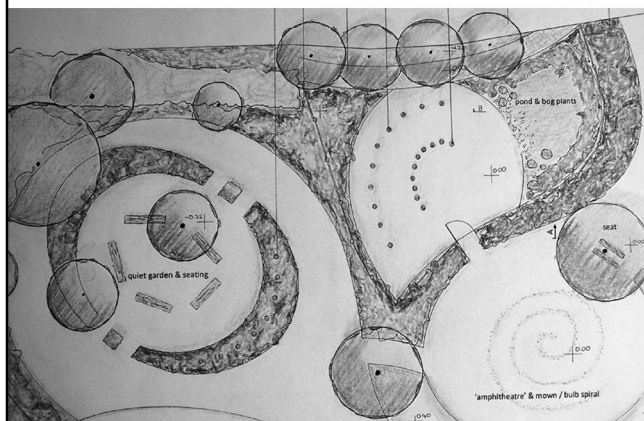
Now taking on new clients

Telephone 07969 277669



Angela Morley
Garden Design
BSc Hort Dip PSGD

Garden Design
Planting Plans
Consultancy



www.wildgardens.co.uk

01749 830 205

Seasoned Logs For Sale

Hardwood
Burns
Well



Delivered Locally

Call Chris on
07773 497188

Neal Laurie Carpentry

**Cabinet Making, Carpentry Services,
Renovations and Repairs**

Custom, fitted and free standing furniture creatively and individually designed to meet your requirements and budget.

Traditional and contemporary styles, handmade and always finished to exceptional standards.

With the same care and attention to detail we can also complete renovations, repairs and general carpentry work including to listed properties.

Tel: 01749 812785 / 07790956211

Address: Unit 4, Lodge Farm Commercial, Doultong, Somerset

Email: nl.c@hotmail.co.uk

Instagram: [neallauriecarpentry](https://www.instagram.com/neallauriecarpentry)

Website: neallauriecarpentry.co.uk

Studies - Home Offices - Kitchens - Wardrobes
Fitted Shelving - Bookcases - Renovations and Repairs



1

YEOVIL - CASTLE CARY - SHEPTON MALLET SERVICE 1, 1A, 1B & 1C


FROM MONDAY 2ND SEPTEMBER 2019

| MONDAY TO SATURDAY (EXCEPT PUBLIC HOLIDAYS) | | | | | | | | | | | FROM MONDAY 2ND SEPTEMBER 2019 | | | | | | | |
|---|------|------|-------|------|------|------|------|------|-------|------|--------------------------------|------|------|------|------|-----|-----|-----|
| SERVICE NO | 1A | 1C | 1B | 1 | 1 | 1 | 1 | 1 | 1C | 1 | 1B | 1 | 1 | 1 | 1 | | | |
| NOTES | SCH | | | SCH | | | | | | | | | | | SAT | SAT | SAT | SAT |
| Yeovil Bus Station | - | - | 0725 | - | 0905 | 1105 | 1205 | 1305 | - | 1635 | 1745 | - | 1055 | 1405 | 1750 | | | |
| Clarence Street, Tesco | - | - | - | - | 0908 | 1108 | 1208 | 1308 | - | 1638 | 1748 | - | 1058 | 1408 | 1753 | | | |
| Kingston, (for Yeovil Hospital) | - | - | 0728 | - | 0910 | 1110 | 1210 | 1310 | - | 1640 | 1750 | - | 1100 | 1410 | 1755 | | | |
| Yeovil College | - | - | 0729 | - | 0911 | 1111 | 1211 | 1311 | - | 1641 | 1751 | - | 1101 | 1411 | 1756 | | | |
| Mudford, Half Moon | - | - | 0735 | - | 0918 | 1118 | 1218 | 1318 | - | 1648 | 1758 | - | 1106 | 1418 | 1803 | | | |
| Marston Magna | - | - | 0740 | - | 0923 | 1123 | 1223 | 1323 | - | 1653 | 1803 | - | 1110 | 1423 | 1808 | | | |
| Queen Camel | - | - | 0744 | - | 0927 | 1127 | 1227 | 1327 | - | 1657 | 1807 | - | 1115 | 1427 | 1812 | | | |
| Sparkford Inn | - | - | 0748 | - | 0931 | 1131 | 1231 | 1331 | - | 1701 | 1811 | - | 1119 | 1431 | 1816 | | | |
| Sparkford, Church Road Turning | - | - | 0750 | - | 0933 | 1133 | 1233 | 1333 | - | 1703 | 1813 | - | - | 1433 | 1818 | | | |
| Haynes Motor Museum | - | - | - | - | - | - | - | - | - | - | - | - | 1121 | - | - | | | |
| Chapel Cross | - | - | 0752 | - | 0935 | 1135 | 1235 | 1335 | - | 1705 | 1815 | - | - | 1435 | 1820 | | | |
| North Cadbury | - | - | 0755 | - | 0938 | 1138 | 1238 | 1338 | - | 1708 | 1818 | - | - | 1438 | 1823 | | | |
| Galhampton, The Old Pub | - | - | 0800 | - | 0943 | 1143 | 1243 | 1343 | - | 1713 | 1823 | - | 1125 | 1443 | 1828 | | | |
| Wincanton Southgate Road Depot | 0615 | 0650 | - | - | - | - | - | - | - | - | - | 0758 | - | - | - | | | |
| Wincanton, King Arthurs School | - | - | - | - | - | - | - | - | 1525 | - | - | - | - | - | - | | | |
| Shepton Montague Inn | - | - | - | - | - | - | - | - | 1534 | - | - | - | - | - | - | | | |
| Castle Cary, Horse Pond | 0628 | 0701 | 0805C | 0901 | 0947 | 1147 | 1247 | 1347 | - | 1717 | 1827 | 0812 | 1129 | 1447 | 1832 | | | |
| Ansford, Churchfields | 0631 | - | 0808 | 0904 | 0951 | 1151 | 1251 | 1351 | - | 1721 | 1831 | 0816 | - | 1451 | 1836 | | | |
| Bruton, Sunnyhill School | - | - | 0820 | - | - | - | - | - | 1543 | - | 1840 | - | - | - | - | | | |
| Bruton, West End | - | - | 0823 | - | - | - | - | - | 1546 | - | 1843 | - | - | - | - | | | |
| Bruton, Burrowfields | - | - | - | - | - | - | - | - | 1548 | - | - | - | - | - | - | | | |
| Bruton, Church Bridge | - | - | - | - | - | - | - | - | 1550 | - | - | - | - | - | - | | | |
| Bruton, Sunnyhill School | - | - | - | - | - | - | - | - | 1605 | - | - | - | - | - | - | | | |
| Bruton, Sexeys School | - | - | - | - | - | - | - | - | 1607 | - | - | - | - | - | - | | | |
| Wyke Lane Junction | - | - | - | - | - | - | - | - | 1612 | - | - | - | - | - | - | | | |
| Lamyatt, Poplar Farm | - | - | - | - | - | - | - | - | 1616 | - | - | - | - | - | - | | | |
| Castle Cary, OPPOSITE Railway Stn | 0634 | 0705 | - | 0907 | 0954 | 1154 | 1254 | 1354 | - | 1724 | - | 0819 | 1135 | 1454 | 1839 | | | |
| Alhampton | 0636 | - | - | 0909 | 0956 | 1156 | 1256 | 1356 | 1622 | 1726 | - | 0821 | 1137 | 1456 | 1841 | | | |
| Ditcheat, Bus Shelter | 0639 | - | - | 0912 | 0959 | 1159 | 1259 | 1359 | 1625 | 1729 | - | 0824 | 1140 | 1459 | 1844 | | | |
| Wincanton, Southgate Road Depot | - | - | - | - | - | - | - | - | - | - | 1855 | - | - | - | - | | | |
| Southwood | 0643 | 0709 | 0832 | 0916 | 1003 | 1203 | 1303 | 1403 | 1629 | 1733 | - | 0828 | 1144 | 1503 | 1848 | | | |
| Evercreech, Village Hall | 0646 | 0714 | 0837 | 0921 | 1008 | 1208 | 1308 | 1408 | 1634 | 1738 | - | 0833 | 1149 | 1508 | 1853 | | | |
| Prestleigh (for Bath & West) | 0649 | 0718 | 0841 | 0925 | 1012 | 1212 | 1312 | 1412 | 1638 | 1742 | - | 0837 | 1153 | 1512 | 1857 | | | |
| Cannard's Grave | 0652 | 0721 | 0844 | 0928 | 1015 | 1215 | 1315 | 1415 | 1641 | 1745 | - | 0840 | 1156 | 1515 | 1900 | | | |
| Whitstone Road | - | - | 0846 | 0930 | 1017 | 1217 | 1317 | 1417 | - | 1747 | - | 0842 | - | 1517 | 1902 | | | |
| Cannard's Grave Road | 0653 | 0722 | - | - | - | - | - | - | 1643 | - | - | - | 1157 | - | - | | | |
| Shepton Mallet, Cenotaph | 0656 | 0724 | 0851 | 0935 | 1022 | 1222 | 1322 | 1422 | 1648 | 1752 | - | 0847 | 1200 | 1522 | 1907 | | | |
| Cannard's Grave Road | - | - | - | - | 1025 | 1225 | - | 1425 | - | - | - | - | - | - | - | | | |
| Shepton Mallet, Dobbies Garden Centre | - | - | - | - | 1032 | 1232 | - | 1432 | - | - | - | - | - | - | - | | | |
| Oakhill | - | 0731 | - | - | - | - | - | - | 1655S | - | - | - | - | - | - | | | |

SCH = OPERATES BRUTON SCHOOLDAYS ONLY

C = CONNECTS WITH SERVICE 667 TO AND FROM STREET (STRODE COLLEGE)

SAT = THE ONLY SERVICES RUNNING ON A SATURDAY

| | | | | | | | | | | | | | |
|---|-------|------|------|------|------|------|------|------|-------|-------|------|-------|------|
|  | | | | | | | | | | | | | |
| <div> <div>1</div> <div> SHEPTON MALLET - CASTLE CARY - YEOVIL SERVICE 1, 1A, 1B & 1C FROM MONDAY 2ND SEPTEMBER 2019 </div> </div> | | | | | | | | | | | | | |
| <div> <div>MONDAY TO SATURDAY (EXCEPT PUBLIC HOLIDAYS)</div> <div>FROM MONDAY 2ND SEPTEMBER 2019</div> </div> | | | | | | | | | | | | | |
| SERVICE NO | 1A | 1 | 1B | 1C | 1 | 1 | 1 | 1 | 1B | 1B | 1C | 1 | 1 |
| NOTES | | | | SCH | | | | | | | SCH | | SAT |
| Oakhill | - | - | - | 0731 | - | - | - | - | - | - | 1655 | - | - |
| Shepton Mallet, Dobbies Garden Centre | - | - | - | - | - | - | 1055 | 1255 | 1525 | - | - | - | - |
| Cannard's Grave Road | - | - | - | - | - | - | 1102 | 1302 | 1532 | - | - | - | - |
| Shepton Mallet, Cenotaph | - | 0720 | - | 0750 | 0905 | 1005 | 1105 | 1305 | 1405 | 1535 | - | 1705 | 1800 |
| Whitstone Road | - | 0725 | - | - | 0910 | 1010 | 1110 | 1310 | 1410 | 1540 | - | 1710 | 1805 |
| Cannard's Grave | - | 0727 | - | 0752 | 0912 | 1012 | 1112 | 1312 | 1412 | 1542 | - | 1712 | 1807 |
| Prestleigh (for Bath & West) | - | 0729 | - | 0754 | 0914 | 1014 | 1114 | 1314 | 1414 | 1544 | - | 1714 | 1809 |
| Evercreech, Village Hall | - | 0732 | - | 0757 | 0917 | 1017 | 1117 | 1317 | 1417 | 1547 | - | 1717 | 1812 |
| Southwood | - | 0737 | - | 0802 | 0922 | 1022 | 1122 | 1322 | 1422 | 1552 | - | 1722 | 1817 |
| Ditcheat, Bus Shelter | - | 0741 | - | 0806 | 0926 | 1026 | 1126 | 1326 | 1426 | - | - | 1726 | 1821 |
| Alhampton | - | 0744 | - | 0809 | 0929 | 1029 | 1129 | 1329 | 1429 | - | - | 1729 | 1824 |
| Castle Cary, Rail Station | - | 0746 | - | - | 0931 | 1031 | 1131 | 1331 | 1431 | - | - | 1731 | 1826 |
| Lamyatt, Poplar Farm | - | - | - | 0815 | - | - | - | - | - | - | - | - | - |
| Wyke Lane Junction | - | - | - | 0820 | - | - | - | - | - | - | - | - | - |
| Wincanton, Southgate Road Depot | - | - | - | - | - | - | - | - | - | - | - | - | - |
| Ansford, Churchfields | 0749 | - | - | - | 0934 | 1034 | 1134 | 1334 | 1434S | - | - | 1734S | 1829 |
| Wincanton, Memorial Hall | - | 0725 | - | - | - | - | - | - | - | - | - | - | - |
| Castle Cary, Town Hall | - | - | - | - | - | - | - | - | 1437S | - | - | 1737S | - |
| Bruton, Burrowfield | - | - | 0824 | - | - | - | - | - | - | - | - | - | - |
| Bruton, Church Bridge | - | 0740 | 0827 | - | - | - | - | - | - | - | - | - | - |
| Bruton, West End | - | 0745 | - | - | - | - | - | - | 1601 | - | - | - | - |
| Bruton, Sunnyhill School | - | - | 0831 | - | - | - | - | - | 1604 | - | - | - | - |
| Castle Cary Horsepond | 0755C | 0755 | - | 0940 | 1040 | 1140 | 1340 | - | 1615 | 1735C | - | 1833 | - |
| Shepton Montague Inn | - | - | 0837 | - | - | - | - | - | - | - | - | - | - |
| Wincanton, King Arthurs School | - | - | 0850 | - | - | - | - | - | 1452S | - | - | - | - |
| Wincanton, Southgate Road Depot | - | - | - | - | - | - | - | - | - | - | 1750 | - | - |
| Galhampton, The Old Pub | - | 0800 | - | 0945 | 1045 | 1145 | 1345 | - | 1620 | 1740 | - | 1838 | - |
| North Cadbury | - | 0805 | - | 0950 | 1050 | 1150 | 1350 | - | 1625 | 1745 | - | 1842 | - |
| Chapel Cross | - | 0808 | - | 0953 | 1053 | 1153 | 1353 | - | 1628 | 1748 | - | 1845 | - |
| Sparkford, Church Road Turning | - | 0810 | - | 0955 | 1055 | 1155 | 1355 | - | 1630 | 1750 | - | 1847 | - |
| Sparkford Inn | - | 0813 | - | 0957 | 1057 | 1157 | 1357 | - | 1634 | 1752 | - | 1848 | - |
| Queen Camel | - | 0817 | - | 1001 | 1101 | 1201 | 1401 | - | 1638 | 1755 | - | 1851 | - |
| Marston Magna | - | 0821 | - | 1005 | 1105 | 1205 | 1405 | - | 1642 | 1800 | - | 1855 | - |
| Mudford, Half Moon | - | 0826 | - | 1010 | 1110 | 1210 | 1410 | - | 1647 | 1805 | - | 1900 | - |
| Kingston, (for Yeovil Hospital) | - | 0834 | - | 1018 | 1118 | 1218 | 1418 | - | 1655 | 1813S | - | 1908S | - |
| Yeovil Borough | - | 0837 | - | 1021 | 1121 | 1221 | 1421 | - | 1658 | 1816S | - | 1910S | - |
| Yeovil Bus Station | - | 0839 | - | 1023 | 1123 | 1223 | 1423 | - | 1700 | 1818S | - | 1913S | - |
| <div> <div>SCH = OPERATES BRUTON SCHOOLDAYS ONLY</div> <div>C = CONNECTS WITH SERVICE 647 TO AND FROM STREET (STRODE COLLEGE)</div> <div>SAT = THE ONLY SERVICES RUNNING ON A SATURDAY</div> </div> | | | | | | | | | | | | | |
| <div> <div>Tel - 01963 33124 (WINCANTON) - 01935 475872 (YEOVIL) - 01305 823039 (PORTLAND)</div> <div>www.southwestcoaches.co.uk</div> </div> | | | | | | | | | | | | | |

LIBRA TRAVEL www.bustime.org/operators/libra-travel Tel: 01373 812255

519 – EVERCREECH – SHEPTON MALLET – STREET School Days only

| | | | |
|-------------------------------|-------|-------------------------------|-------|
| Evercreech Village Hall | 08.00 | Street – Strode College | 16.45 |
| Evercreech Surgery | 08.03 | Shepton Mallet Police Station | 17.07 |
| Collett Ave (W-bound) | 08.15 | Collett Ave (E-bound) | 17.10 |
| Shepton Mallet Police Station | 08.18 | Evercreech Surgery | 17.23 |
| Street – Strode College | 08.45 | Evercreech Village Hall | 17.25 |

BERRYS COACHES
www.berryscoaches.co.uk
01823 331356
info@berryscoaches.co.uk

Offering coach travel from the Westcountry to London, with a limited service from 12 April 2021.
Please see their website for most up-to-date timetables and details.

TRAVELLING IN SOMERSET

www.travelsomerset.co.uk

On this website you will find a map showing current and future roadworks as well as live updates on accidents and other incidents which may cause delays. You will also find links to various other helpful travel information – from rail, air and buses to walking and cycling.

Information comes from a wide range of sources, from highways teams and traffic cameras, third parties like Inrix, the emergency services and utility firms. We do our very best to make sure the information provided is accurate, but it is not exhaustive and should never be completely relied upon. With 4,200+ miles of road in Somerset, there's a lot to keep an eye on and some things we simply don't know about.

To improve and encourage the sharing of information, we have a dedicated Twitter account – **@TravelSomerset**. Please follow us for live alerts and if you spot a problem which we're not reporting, you can let us know by sending us a tweet (if it's safe to do so). We usually monitor Twitter from 7 am to 7 pm Monday to Friday (except Bank Holidays) and read all messages when we can, although we cannot reply to every tweet.

We're also unable to formally act upon reports of problems such as potholes or complaints via tweets. If you do contact us to report issues like this, we will try to signpost you to the relevant form on our website. Doing it this way means your report is sent immediately to the correct department to be dealt with, so will hopefully lead to a quicker resolution.

If you need a response or your enquiry is urgent, find out how to get in touch via our Highway Area Offices page. You can also find out more about other highways services on our Roads, Parking and Transport page.

READERS!

If you contact a local business or service after seeing it in EDIS, please let them know. It helps them to know their advert has been effective and in turn helps us to keep producing this publication free to local people.

POST OFFICE COLLECTION TIMES

www.royalmail.com

The plate on the post box in Victoria Square gives the last collection times as:

Monday to Friday: 5.15 pm
Saturday: 11.00 am

There are no collections from post boxes on Sundays and Bank Holidays.

The plate also states that "A later collection is made at 6pm from the letter box at Shepton Mallet Delivery Office"; and that "Other collections will be made throughout the day as required until the last time shown".

Contact: Tel: **03457 740740** Fax: 0345 6000606.

MENDIP COMMUNITY TRANSPORT

www.mendipcommunitytransport.co.uk

Registered Charity No 1094918

MCT House, Unit 10a, Quarry Way Business Park, Waterlip, Shepton Mallet, Somerset BA4 4RN

Tel: **01749 880613**

Mendip Slinky

Please ring **01749 880482**

Booking line open 9.30 am to 4 pm, Mon – Fri.

Door to door transport for those people who cannot easily use public transport. Free registration and concessionary fares accepted. Friendly and helpful driving staff always available to help you. All personnel fully insured and DBS checked.

Hospital Car Scheme

Please ring **01749 880613**

Booking line open 10 am to 4.30 pm, Mon – Fri

This service is currently suspended

Group Transport

Mendip Community Transport can provide your group with transport to wherever you want to go. For a quote please ring **01749 880613** for full details and a costing.

NEW CONTRIBUTORS

Do you run a club or group or provide a service that is not mentioned here? Do you have an event you would like to be included in the EDIS diary? If so contact the EDIS team by 13 September 2021.

**EVERCREECH GREENWAY/
STRAWBERRY LINE**

www.thestrawberryline.org.uk

The Parish Council has been investigating the possibility of providing a safe traffic-free path for pedestrians and cyclists from Evercreech to join up with the Strawberry Line at Shepton Mallet, and from there the National Cycle Network.

It was suggested at the 'Remembering the Railway' event at the Village Hall in 2016, that part of the route could use the disused S&D railway line. This received an overwhelmingly supportive response.

If this project is to succeed, a working group needs to be formed, so **we are looking for volunteers** to work with the group, to investigate possible routes, and work with partners such as Sustrans to take it forward.

If you are a supporter of such a scheme, and would be willing to help bring it forward, please contact Rob Reed: **rob_reed@btinternet.com**

Please go on our website (above) & Facebook page to follow and support our application in Shepton Mallet, which is a precursor to the path to Evercreech.

TRAIN SERVICES

CASTLE CARY: Station Wharf, Castle Cary BA7 7PE
Most services are operated by Great Western Railway:
London (Paddington) – Taunton – Devon/Cornwall
and Bristol/Bath/Westbury – Weymouth.

South Western Railway also have a service from and to London Waterloo via Salisbury. Alternatively, there are frequent services from Templecombe Station to Salisbury and London Waterloo.

For times and prices (24 hrs), phone National Rail Enquiries: **03457 48 49 50** or go to: **www.nationalrail.co.uk** where you'll find special offers and a helpful Journey Planner. If you travel regularly, it's important you check your journey.

Tickets

There is a range of money saving Advance tickets and the earlier you book, the cheaper the fare. Tickets can be booked by phoning **0345 7000 125** and online at **www.gwr.com**. There is a ticket vending machine at the entrance to the platform where you can pay by card or collect pre-paid tickets.

You can also book at the station. Ticket Office opening times: Monday-Saturday 6.30 am to 9.30 pm and Sunday 2.30 pm to 9.30 pm.

Useful phone number - Assisted Travel: **0800 197 1329**

EDIS VOLUNTEERS

The EDIS Team would like to recruit more volunteers. If you can spare some time twice a year to work with us and have basic IT skills, please contact us on **01749 831069** to find out more.

Station Car Park

Castle Cary has a Pay and Display Car Park operated by APCOA, open and charging 24 hours a day, 7 days a week. Parking options:

- Pay at the pay machine or ticket office (when open) and display the ticket in your windscreen.
- Purchase a valid parking permit online at: **seasontickets.apcoa.co.uk**
- Pay by using APCOA Connect (see signs for details)
- Pay on account with AutoPay - **www.apcoaconnect.com**
- Use Late Pay if you forgot to pay. See online; charges may apply.

Pay and Display Tariffs

| | |
|----------------------------------|-------|
| Mon-Fri before 10 am | £3.70 |
| Mon-Fri after 10 am and Sat/Sun: | £2.30 |
| Daily tickets valid to midnight. | |

APCOA Connect Tariffs

| | |
|----------------------------------|-------|
| Mon-Fri before 10 am | £3.30 |
| Mon-Fri after 10 am and Sat/Sun | £2.30 |
| Daily tickets valid to midnight. | |

STATION TAXIS

The station is served by a taxi rank or a cab office. Check availability before travelling, and pre-book if necessary. The following are mentioned on the National Rail Website - **www.nationalrail.co.uk/posters/CLC.pdf**

Anzford Cars - **07831 249441**

I.T.Cars - **07528 515722**

Number 7 - **01963 351015**

They are not always in the rank outside - so book ahead.

LOCAL TAXIS

ACE Taxis – **07841 565550**

Chinnock Taxis – **01749 831408**

Swift Taxis – **01749 340820**

BRISTOL AIRPORT

Bristol BS48 3DY

Tel **0371 334 4444**

www.bristolairport.co.uk

Serving the South West and Wales, Bristol Airport offers flights to over 125 destinations, including the UK, Ireland, Europe and the rest of the world. Due to the current situation, it is vital to check on the website for any changes.

Car Park

Passenger pick up and a choice of secure, monitored short and long stay car parks with CCTV coverage and automatic number plate recognition.

The sooner you book on-line the more you save.

All car parking queries Tel: **0371 334 4450**

NEW CONTRIBUTORS

Do you run a club or group or provide a service that is not mentioned here? Do you have an event you would like to be included in the EDIS diary? If so contact the EDIS team by 13 September 2021.

BANKS

There is a Lloyds Bank at 5 High Street, Shepton Mallet - opening hours are: Mon, Tues, Thurs, Fri, 9.30 am - 2 pm, Wed 10 am – 2 pm. Sat and Sun closed.

There are no banks in Castle Cary but there is a cashpoint outside the former Barclays Bank.

There is a cash dispenser inside Evercreech Co-op.

DOCTORS' SURGERIES**THE PARK MEDICAL PARTNERSHIP**

Cannards Grave Road,
Shepton Mallet, BA4 5RT
01749 334383

EVERCREECH SURGERY

Prestleigh Road,
Evercreech, BA4 6JY
01749 830325



www.parkmedicalpractice.nhs.uk

During the Coronavirus outbreak, we have been working hard to continue to provide care safely and have made changes to the way you can contact us. **Current guidance is to limit face to face contact where possible and help stop the spread of the virus.** To achieve this, we have increased the use of remote consultations. These will never replace face to face appointments which will be available to all patients where appropriate. However, they can be a convenient way for people to access medical advice and treatment. We are also offering video consultations and online consultations where you can contact us directly via the internet. We encourage you to try these new methods of accessing advice which will help us to ensure that face to face appointments are there for all who need them in a safe environment.

There are two ways you can access help from the surgery:

You can telephone the surgery. Your call will be answered by one of our reception staff who will ask you some questions about the reason for your call to help them to book the right appointment for you. This could be a telephone appointment with one of our clinical team. We have a wide range of professionals offering telephone appointments including GPs, Nurse Practitioners, Physiotherapists and Practice Nurses. Additional appointments are now available on some evenings and Saturdays for people with routine problems that are not able to take a call during normal surgery hours. They may be able to resolve your problem over the telephone or they may wish to assess you further by asking you to send a photograph via our confidential system, doing a video consultation or seeing you at the surgery. The triaging clinician will talk you through this process which is easier than many people think.

You can visit our website to book a telephone appointment or complete a confidential online form. Your form will be reviewed by one of our reception team and directed to the most appropriate clinician. From this point onwards your care will be exactly the same as if you accessed via telephone. If you prefer, the initial triage consultation can be conducted via our confidential two-way messaging system.

You can order repeat prescriptions via our website or by telephoning the surgery between 11 am and 1 pm, or 3 pm and 5 pm

If you are asked to come into the surgery for a face to face appointment, measures are in place to keep you safe from infection during your visit to the surgery. **Please remember to wear a face covering.** At both Park and Evercreech Surgery we have an intercom at the main entrance to welcome patients attending the surgery.

GROVE HOUSE SURGERY

www.grovehousesurgery.nhs.uk

West Shepton, Shepton Mallet

Somerset BA4 5UH

Appointments: **01749 342863**

Urgent Calls: **01749 342314**

Surgery Opening Hours:

Monday 8.00 am – 6.30 pm

Tuesday 7.30 am – 7.00 pm

Wednesday 8.00 am – 7.00 pm

Thursday 8.00 am – 6.30 pm

Friday 8.00 am – 6.30 pm

Telephone lines open Monday – Friday 8.00 am – 6.30 pm

MILLBROOK SURGERY (Castle Cary)

www.millbrook-surgery.nhs.uk

Millbrook Gardens, Castle Cary, BA7 7EE

Tel: **01963 350210**

Surgery Opening Hours: Monday - Friday 8.00 am - 6.30 pm,
except Tuesday: 7.30 am - 6.30 pm.

BRUTON SURGERY

www.brutonsurgery.nhs.uk

Patwell Lane, Bruton, BA10 0EG

Tel: **01749 812310**

Surgery Opening Hours: Monday – Friday
8.00 am - 6.30 pm

**VILLAGE DEFIBRILLATOR**

Evercreech has a defibrillator outside the **Village Hall** which has public access.

In the event of an emergency after phoning for an ambulance you will be given the code to use the nearest defibrillator. The defibrillator will “talk” you through how to use it whilst you wait for the ambulance.

NHS 111

NHS 111 is a service to make it easier for you to access local NHS healthcare services. Call 111 if:

- You need medical help fast but it's not a 999 call.
- You think you need to go to A&E or need another NHS urgent care service.
- You don't know who to call.
- You need health information or reassurance about what to do next.

For immediate, life-threatening emergencies, continue to call 999.

NHS 111 - How does it work?

The NHS 111 service is staffed by a team of fully trained advisers, supported by experienced nurses. They will ask you questions to assess your symptoms, then give you the healthcare advice you need or direct you straightaway to the local service that can help you best. If a health professional has given you a specific phone number to call when you are concerned about your condition, continue to use that number.

From 6.30 pm each evening until 8 am the next morning, at weekends and on Bank Holidays the NHS 111 Service covers for all doctors. If you need medical help at these times please phone **111**. The NHS 111 Service CANNOT take prescription requests, make surgery appointments or give results.

NURSING CARE

Within the Surgery setting there are Nurse Practitioners, Registered Nurses and Health Care Assistants who between them provide skilled nursing care to the practice population.

Nurse Practitioners are registered nurses who have undertaken an additional degree in autonomous practice, enabling them to assess, treat and prescribe for a range of illnesses and conditions.

Practice Nurses provide skilled nursing care within the Surgery. The many areas they cover include Monitoring of:

Diabetes, Vascular heart disease, Blood pressure, Asthma, COPD and Epilepsy.

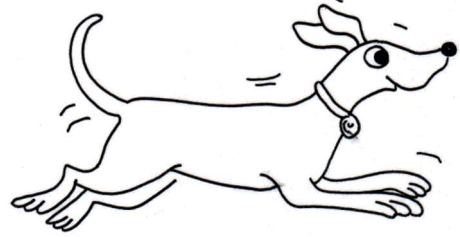
Also

Health Promotion and Screening, Wound Management, Travel Advice and Vaccinations, Cervical Smears, Child Vaccinations, Contraceptive Advice and monitoring.

Health Care Assistants are qualified to carry out:

| | |
|--|--------------------------|
| Blood tests, | Blood pressure readings, |
| ECGs, | Hearing Tests, |
| Smoking Cessation, | Chaperoning, |
| Dressings (as directed by the Practice Nurse), | |
| Flu Vaccinations, | Health Promotion. |

Walkie Talkie Dog Sitter



Registered Dog and Home Sitting Service

Walking, talking, feeding and all other needs taken care of – in your home or mine

Lots of love and care

Dogs and cats welcome

£25 per night (24 hrs)
or other rates on application

Odette Stevens
07854 286413

www.walkietalkiedogsitter.co.uk



DISTRICT NURSE

The District Nurse provides skilled nursing care for people living at home in the community by offering advice and information, treatment and support.

The District Nurse:

- is a qualified registered nurse who has undertaken further training to plan, assess and provide skilled nursing care to patients who are in their homes and have been referred by their GP;
- leads a team of nursing staff and ensures that the care provided is properly planned and delivered.

NEW ADVERTISERS!

Would you like to tell local people about your local business?

EDIS is delivered to over 1,000 homes in Evercreech and surrounding areas twice each year.

Contact the EDIS Team by 13 September 2021 (see cover page) to find out more about advertising in these pages.

SHEPTON MALLET COMMUNITY HOSPITAL

<https://www.somersetft.nhs.uk/>

Bucklers Way, Old Wells Road, Shepton Mallet BA4 4PG
Tel: 01749 342931

Fosse Ward – 01749 341101

In-patient beds and Ambulatory Care Unit

Visiting 2.00 pm – 4.00 pm and 6.00 pm – 8.00 pm

Ambulatory Service

Referrals from health care professionals only

Contact: **01749 341104** Monday to Friday 9 am to 5 pm.

Saturday, Sunday and bank holidays 9 am to 1 pm.

Minor Injuries Unit

www.somersetft.nhs.uk/minor-injury-units/

Open 7 days a week from **8am – 9pm** last patient admitted at **8.30pm**.

X-rays available 9am – 5pm Monday – Friday at Shepton Mallet

The hospital is staffed by emergency nurse practitioners who diagnose and treat a wide range of non-life threatening minor illnesses and injuries: chest, throat, eye and urinary infections, emergency contraception, sprains, broken bones, cuts, wounds, bites and minor head injuries. If you're not sure which service to use phone 111 telephone for advice. For life-threatening emergencies such as heart attacks, strokes, unconsciousness and breathing problems call 999.

Practice Plus Group Hospital (Formerly The Treatment Centre)

www.sheptonmallethospital.nhs.uk/contact/

This is on the Shepton Mallet Hospital campus and accepts NHS patients for a range of treatments following GP referral.

For more information go to the website or phone:

0333 321 8278.

LEAGUE OF FRIENDS OF SHEPTON MALLET COMMUNITY HOSPITAL

www.sheptonhospitalfriends.btck.co.uk

sheptonhospitalfriends@btinternet.com

Secretary: Mrs Kathy Orme **01749 678789**



Shepton Mallet Community Hospital is on the outskirts of Shepton Mallet, just on the edge of the Mendip Hills in Somerset. The League of Friends exists to provide support to the excellent NHS staff who run the hospital, and to raise funds to assist the patients and staff.

The hospital has in-patient beds for 8 people which provide a much-appreciated location for people in the Mendip area who can be close to their own home or family as they recover. There are two suites for local residents who can receive scheduled treatments at the Community Hospital rather than travelling to the major hospitals in the area.

PARK & RIDE to RUH Bath

www.travelinesw.com **0871 200 2233**

Service 42 operates between the Odd Down Park and Ride site and RUH Bath and takes approximately 20 minutes. The service operates between Monday and Friday from 6.30 am to 8 pm, running every 30 minutes between 7 am and 5 pm.

MATERNITY UNIT

Shepton Mallet Community Hospital

www.somersetft.nhs.uk/maternity/

Antenatal Clinics are held by appointment, by contacting the midwife team on **01749 342378**. Please speak with your GP about your pregnancy and birth options.

During the pandemic, patients are being seen at Paulton Hospital.

HOSPITAL TRANSPORT

Getting to a hospital or medical appointment: If you're going to hospital for an appointment, tests or treatment, you'll normally be expected to make your own way there. Try to get a friend or relative to take you to hospital and collect you after you've been discharged. If you visit a district hospital you will have to pay for parking.

NHS funded patient transport: You may be eligible for free non-emergency patient transport services. These services provide transport to and from hospital for people who have a medical need for it. Find out if you are entitled to NHS free hospital transport by phoning the NHS Patient Transport Advice Centre on **01278 727444** between 8.30 am and 6.30 pm, Monday to Friday.

Community transport

www.mendipcommunitytransport.co.uk/

Phone: 01749 880613

SLINKY BUS - The Mendip Slinky - **01749 880482** and the Sedgemoor Slinky - 01749 880948 are operating, however there are restrictions on the number of passengers.

ROUTE 665 - This service is operating to a normal timetable. However due to restrictions on passenger numbers please phone **01749 880613** to book a journey.

ROUTE 67 - This service is operating to the published timetable, with a restriction of seven passengers at any one time. An additional vehicle is operating at peak times of the day to provide additional capacity for pupils travelling to/from The Blue School, Wells.

HOSPITAL CARS - This service is currently suspended.

Useful Hospital Phone Numbers

West Mendip Community Hospital, Glastonbury:

01458 836450

Royal United Hospital, Bath:

01225 428331

Yeovil District Hospital:

01935 475122

South Bristol Community Hospital:

01179 230000

Southmead Hospital, Bristol:

01179 505050

Musgrove Park Hospital, Taunton:

01823 333444

NHS BLOOD AND TRANSPLANTwww.blood.co.uk

Donation is still going ahead during the pandemic, even in areas of local lockdown.

Visit the website for more information and to locate preferred session venue, or phone **0300 123 23 23** to book an appointment for your next donation.



The need for blood never stops so please try to find the time to attend a session.

ALZHEIMER'S SOCIETYwww.alzheimers.org.uk*United against dementia*

Alzheimer's Society in Somerset provides a support service across the county for people living with dementia and their carers. Our Dementia Advisor Service can offer personalised, practical and emotional support, information and guidance to people affected by dementia.

This service continues to run online during the Covid-19 pandemic. Telephone support and some home visits resumed in October 2020. Unfortunately, currently we do not have a date to resume our Memory Cafés or Singing for the Brain groups.

For more information, contact the Dementia Connect Support Line 0333 150 3456 or email somerset@alzheimers.org.uk

VICTIM SUPPORTwww.victimsupport.org.uk

If you've been affected by crime, call the local victim care team in Avon and Somerset on **0300 303 1972**. Lines are open 9.30 am - 5.30 pm Mondays, Wednesdays and Fridays, and 11 am - 7 pm on Tuesdays and Thursdays.

If you need support outside of our open hours, call our **Supportline** for free on **08 08 16 89 111** or **request support via the website**.

This service is free, confidential and available to anyone in England and Wales, regardless of whether the crime has been reported or how long ago it happened. The support services we offer are tailored to the needs of each person. These include: information and advice, immediate emotional and practical help, longer term emotional and practical help; advocacy; peer support and group work, restorative justice, personal safety services and help in navigating the criminal justice system.

**Evercreech Pharmacy****01749 830267**

Victoria Square, Evercreech, BA4 6JP

Pharmacy Service

- Appliance dispensing
- Medicines use review (MUR) service
- Prescription collection from local General Practices
- Prescription delivery service
- Private consultation room

Pharmacy Service (NHS)

- Gluten-free food service
- Medication review service
- Supervised consumption of medicines

Pharmacy Service (Non-NHS)

- Blood pressure monitoring

Open Mon-Fri: 9.00am-1.00pm, 2.00pm-6.00pm
Sat: 9.00am-1.00pm

**FACEBOOK GROUPS****What's Up in Evercreech**

Catch up with local news and chat - **advertising on a Friday only please.**

Buy / Sell / Wanted – Evercreech

Businesses for Evercreech

SHEPTON MALLET WEBSITES

Shepton Life - www.sheptonlive.com

Tourist Information – www.visitsheptonmallet.co.uk

NATIONAL CHILDBIRTH TRUST

enquiries@nct.org.uk

www.nct.org.uk

For support, information and friendship, with online options now available. For all enquiries please call **0300 330 0700**

SOMERSET DRUG & ALCOHOL SERVICE

www.turning-point.co.uk/sdas

SDAS Young Peoples Service supports all young people across Somerset who are experiencing difficulties with their substance use. A team of specialist workers with experience and understanding of issues affecting young people, offers confidential, non-judgemental advice, information and support in a flexible manner. Appointments are arranged for wherever clients feel most comfortable and the Team are happy to work around their needs and goals.

Support is offered to young people with concerns about their own relationship with alcohol or drugs and also young people who are struggling to deal with the impact of another person's substance use - a parent, sibling or any significant person in their life.

If you need to speak with a member of the Team please call: **0300 303 8788**. Available 24/7 for enquiries.

ALCOHOLICS ANONYMOUS

www.alcoholics-anonymous.org.uk

Help line: **0800 9177 650**

There is a meeting **every Tuesday 10:45 am – 12:45 pm** in the Parish Room behind St Michael's Catholic Church, 6 Park Road, Shepton Mallet. **Please note that due to Covid-19, meetings are limited to nine people attending.**

Please visit the above website to find out more or send an email to help@aamail.org.

CRUSE - Bereavement Care

www.cruse.org.uk (adults)

www.hopeagain.org.uk (children & young people)

Free Helpline: **0808 808 1677**

Support will be offered by phone, email or internet until restrictions ease.

Somerset Area Cruse Bereavement Care supports bereaved **adults, children and young people** throughout Somerset.

If you would like to make a donation go to:

www.cruse.org.uk/donate



We are Versus Arthritis. We're the 10 million people living with arthritis. We're the carers, researchers, healthcare professionals, friends, parents, runners and fundraisers all united in our ambition to ensure that one day, no-one will have to live with the pain, fatigue and isolation that arthritis causes. For more information visit our website.

AGE UK SOMERSET

www.ageuk.org.uk/somerset

info@ageuksomerset.org.uk

Charity number 1015900

**** Community sessions will be restarting from 17 May ****

AGE UK are trying to offer most services in a Covid-safe way so do contact to see what can be done. For enquiries telephone **01823 345613** between 10 am and 3 pm, Monday to Friday or Main Office 01823 345610.

Welfare Benefits Advice

Age UK Somerset provides an independent, confidential and free welfare benefits service for older people.

Volunteer Service

Volunteers play a crucial part in the work of Age UK Somerset and are always required for befriending, welfare, benefits advice and fundraising. No experience is necessary and full training will be provided.

To enquire about this service or to find out about becoming a Volunteer phone: **01823 345627**.

Befriending Service

Age UK has a large team of befriending volunteers available for one-to-one support, regular visits or telephone calls as well as for links into services, community groups and activities. Volunteers visit people in their own home to chat and enjoy a cup of tea in a relaxed environment. For further information about the service, or if you wish to volunteer, phone: **01823 345627**.

Toenail cutting – this service is still running in Mendip.

Age UK offer toenail cutting as a clinic-based service for those aged 60+. Those wishing to apply for the service should in the first instance speak to their GP who can refer them to the Podiatry Service. Please phone for up to date advice and information: **01823 345610**.

READERS!

If you contact a local business or service after seeing it in EDIS, please let them know. It helps them to know their advert has been effective and in turn helps us to keep producing this publication free to local people.

MATURE MOVERS

Classes are currently on hold. Please visit the website for updates regarding new arrangements.

Promote your general wellbeing with this health boosting activity and help you age well. Gentle exercise to music, choreographed, fun and lively. Mainly standing with a seated element. Great for improving mobility and posture. It helps you to feel more relaxed, gently stretches your muscles and strengthens your joints whilst improving balance. It also gives you a chance to meet new people.

You don't have to worry about keeping up; the moves are easy. The class caters for any ability and the emphasis is very much on feeling happy.

Contact - **01823 345626** or
ageingwell@ageuksomerset.org.uk

BRITISH RED CROSS**www.redcross.org.uk**

Independent Living Team, Red Cross House,
Livingstone Way, Taunton, Somerset TA2 6BD
somersetindependentliving@redcross.org.uk

Office open 9 am – 5 pm, Monday – Friday
Support at Home: Hand, Arm & Shoulder Massage;
Home and Transport Support: **01823 273707**.
Mobility Aids: **01823 273746**.

Medical Equipment Service

For loan of Wheelchairs, Zimmer Frames, Commodes,
Crutches etc and sale of small items (Sock aid etc).
Please contact Ken & Hilary Masters **01963 824209**.
Located at the new Wincanton Health Centre, Dykes Way,
Wincanton BA9 9JB. **By Appointment only**.

HOME FIRST PLUS**www.homefirst.co.uk****Tel: 01935 319006****Email: office@homefirstplus.co.uk**

By appointment only: The Old School, High Street, Queen
Camel, BA22 7NH

HomeFirst Plus (formerly Somerset Care and Repair), a not-for-profit Home Improvement Agency with charitable status, has been providing assistance to clients for the past 20 years, to maintain their homes and ensure their comfort, safety, security and most importantly, their independence.

The Agency works closely with Local District Councils, Health Services and other professional bodies, and offers a wide range of services backed by free and impartial advice. HomeFirst Plus Stair Lift Service can advise, survey, fit and maintain new and reconditioned lifts. Our engineers are fully trained by the manufacturers. Compare our prices as we are usually cheaper than buying directly from the manufacturer and remember our advice is free.

We also survey and advise on level access bathing solutions and use trusted contractors to carry out the works so you know that you are getting exactly what is required to a high standard of workmanship. We provide free advice and surveys to find the best solution for your individual needs.

We provide a range of mobility scooters, rise and fall chairs, and mobility aids and a range of items designed to help make living independently easier. Get in touch to find out more.

We also have Government funding to help bring empty homes back into use. So if you have an empty property, or know of one, then please contact the office on the number below or if you or someone you know could benefit from our on-site training schemes call us to find out more.

So if you have a problem or simply need advice about a property give us a ring on the number above. There are no pressure sales tactics, our advice is free and impartial. For further information visit the above website.



**Fudge, cookies and
cakes for all occasions**

Contact Tabby on **07854 386 576**

Email at: **tabby1986@msn.com**

Find us on Facebook and Instagram

[@fudge_it_sweets_](#)

DOROTHY HOUSE HOSPICE CARE**www.dorothyhouse.org.uk**

Dorothy House Hospice Care supports people with a life-limiting illness, their families and carers, covering an area of over 700sq miles including Evercreech and Shepton Mallet.



The majority of care is delivered in the home and the community.

Providing end-of-life services requires significant funds and for every £1 from the NHS, the hospice has to raise £4. **VISIT OUR SHOP** on the High Street, Shepton Mallet.

NEW CONTRIBUTORS

Do you run a club or group or provide a service that is not mentioned here? Do you have an event you would like to be included in the EDIS diary? If so contact the EDIS team by 13 September 2021.

SALVATION ARMY FOOD BANK, SHEPTON MALLET



Please consider buying a couple of extra food items each week for the food bank in Shepton Mallet. There is a **box at the back of St Peter's**



Church for donations (**non-perishable items, unopened and in date please**). We have limited storage space, so please only try to donate the items we are asking for.

Please drop your donations in when the Church is open – this is currently every day, in daylight hours. Due to the need to respond to changes in Covid-19 constraints, Church opening times are subject to change; please check the notice board for updates. Donations are taken to the Salvation Army once a week.

At this time, you may prefer to take donations yourself to the Salvation Army in Shepton Mallet, between 10 am and 2 pm, Monday, Tuesday and Thursday, or on Sunday mornings.

When you do your weekly shop, please remember those who live in the local area who may need to use this valuable service.

You can donate funds directly to The Salvation Army in Shepton Mallet, so that items which are needed most can be purchased:

justgiving.com/fundraising/TheSalvationArmySheptonMallet

If you need to use the food bank, contact Citizens Advice Mendip, Job Centre Plus, MIND, Community Council for Somerset, YMCA, Health Connections Mendip or Social Services to request a referral form.

Many thanks for your generosity



COMMUNITY COUNCIL FOR SOMERSET

www.somersetccc.org.uk

CCS works to support community groups, organisations and individuals in Somerset. We have a fantastic and dedicated team of local professional advisors and pride ourselves on offering independent advice. Fancy a chat with someone? Village Agents can connect you with a befriending or Talk & Support service. Would you benefit from a free food box, or if you are a Carer, would you benefit from some respite from cooking? We can provide some meal packs for you and the person you care for.

Check out our website to find out more about how we support people, places and enterprise.

The Village Agent for East Mendip is Julie Brown 07985 680262 julieb@somersetccc.org.uk

SAFE FAMILIES www.safefamilies.uk



At Safe Families we know that every child deserves to **thrive**, and we recognise that to do this, children need to be **loved** and **secure** in their own family. When families are isolated and struggling, their children can feel upset and afraid. Facing life alone is hard, and when families feel like there is no one there to help it's a scary place to be, which is why Safe Families' volunteers stand alongside thousands of families every year. We train and support volunteers and connect them with isolated families, so they can build relationships that bring hope. For more information see the website and for details on volunteering or to arrange a chat please contact: dawnholmes@safefamilies.uk

Local Safe Families Story: "Jodie was moved to a Somerset town due to domestic violence and knew nobody. She and her two small children were placed in a house with no carpets and curtains, and an oven door that was hanging off. A volunteer helped Jodie find her way around, get the children registered for nursery and school, and a resource friend supplied curtains, which the volunteer's husband nailed to the wall until we raised money for curtain rails. He also glued the oven glass back on and fixed the door handles in the children's room which had come loose, threatening to lock them in the bedroom. All of these things were simple enough to do but, along with the encouragement and listening ear of the volunteer, made a huge impact on Jodie and her family. The children are now settled, and Jodie made friends at the school gate, meaning the volunteer was no longer needed and could go on to support another vulnerable family."

Village

List of items to borrow

Bedside side/lever
Suction Hand Grips
Gazebo
Pushchair
High Chair
Travel Cot
Tombola Drum
Large Baking (cake) Tins
Large Pans (for preserving etc.)
Wine Glasses
Vintage China and Glassware for Cream Teas, etc.
Wheelchair
Trolley Walker
2 three-wheeled walkers
Commode Chair
Shower stool

**Contact Hilary Foster on
01749 830664.**

If you have items you are prepared to "loan out" let Hilary know.

POLICE - Avon & Somerset Constabulary
www.avonandsomerset.police.uk/localpages

Working with you - Working for you

Shepton Mallet Police Station is now located in Haskins Retail Park, Townsend, BA4 5SB

The Rural Beat Team

| | |
|-----------------|---------------------------|
| Julie Denny | - Neighbourhood Inspector |
| Rachel Clark | - Neighbourhood Sergeant |
| Guy Dury | - PCSO |
| Jane Ellis | - Neighbourhood Constable |
| Stephen Reading | - PCSO Supervisor |
| Sheila Thompson | - PCSO |
| Victoria Ward | - Neighbourhood Constable |

Our aim, as a team, is to build public confidence and reassurance within the rural area, to patrol on a regular basis in an effort to reduce crime and anti-social behaviour and to provide a good service to the public. Should you need to speak to any of the team, please do not hesitate to contact us on the 101 number.

IN AN EMERGENCY DIAL 999

101 – The Non-Emergency number

If you would like to see your advert in the November 2021 EDIS, please email edisads1@gmail.com by no later than Monday 13 September 2021

Prices for adverts:

Loose Insert (1300 provided by yourself)
£25.00

Half page, full colour on Front cover
£75.00

Other Half Page, full colour
£65.00

Internal half page, black and white
£40.00

Quarter page, black and white
£20.00

Small Ads (max 40 words)
£3.00 per 10 words
(small logo counts as 5 words).

Half page adverts are landscape

Quarter page adverts are portrait

Environmental Protection Team - DOGS

All dogs in England, Scotland and Wales are legally required to be microchipped and their details registered. Mendip District Council has a number of powers to deal with dogs.

To report any issues go to **www.mendip.gov.uk** and search for dog services.

Stray dogs

The law requires dogs to wear a collar and an identification tag with the owner's details when out in public. All dogs collected by MDC contractors are scanned for microchips to try and identify owners. If a stray dog is picked up by a contractor and the owner is not found straight away it is taken to kennels. It costs over £69 to retrieve it on the first day and then an extra £16.50 for each day thereafter. If the dog is not retrieved within 7 days the dog will pass into the ownership of the Council and may be re-homed.

Unfortunately, there is no out-of-hours service for owners to collect their dogs from the kennels.

Dog fouling

A person in charge of a dog who does not clear up if it fouls in a public place could face a fine of up to £1000.

Nuisances caused by barking or fouling on private land

Report incident through the above website.

Dog on dog, or other animal attack or threats

Report incident through the above website.

Dangerous dogs (including attacks on humans)

Report incident through the above website.

Dog Welfare

Contact RSPCA on **0300 1234999** if you have concerns about a dog or other domestic pet.

NEIGHBOURHOOD WATCH SCHEME

There are now several schemes operating in the village with their own newsletter etc. We encourage the formation of more groups. If you are interested in forming your own Neighbourhood Watch Scheme and want more information please contact Paul Johnson, Neighbourhood Watch Administrator on **07889 656 575**, email **PaulK.Johnson@avonandsomerset.police.uk**

Watch and Community Schemes

- Community Speedwatch
- Farm Watch
- Horse Watch

CRIME STOPPERS

www.crimestoppers-uk.org

If you wish to pass any information to the Police anonymously please contact Crime Stoppers, the UK's only independent crime fighting charity. **Ring: 0800 555 111**

NOISE NUISANCE

Excessive noise can be a source of annoyance and stress which can interfere with everyday life, cause sleep disturbance and on occasions affect your health.

What we can help with

- Noise from domestic premises e.g. loud music, TV or radio
- Noise from commercial premises
- DIY taking place at unreasonable hours
- Noise from plant machinery and equipment
- Noise from construction and demolition sites
- Noise from sporting activities e.g. motor bike scrambling, clay pigeon shooting etc.
- Dogs that persistently bark

How do I make a complaint about noise?

In order to make a complaint about noise we will need the following information from you:

- Your name and address
- Your telephone number
- Email address (if you have one)
- The address (or site) where the noise is coming from
- The type of noise occurring
- When and for how long it has been occurring
- How the problem is affecting you (e.g. disturbing sleep or closing windows)
- Anything you have tried to help solve the problem (e.g. speaking to your neighbour)

Telephone: **0300 303 8588** or complete on-line form under noise nuisance at www.mendip.gov.uk

If the source of the nuisance is an organised event that has advertised a help line number, use that number also.

STREET LIGHTING NEEDING REPAIR

Call 0345 601 0939

Give the number of the light
and the address / post code OR

www.somerset.gov.uk/roads-and-transport/report-a-problem-with-a-street-light/

To report a **WATER LEAK** online
www.bristolwater.co.uk/report-a-problem-or-leak/

Or phone **0800 801011 (Bristol Water)**

EDIS VOLUNTEERS

The EDIS Team would like to recruit more volunteers. If you can spare some time twice a year to work with us and have basic IT skills, please contact us on **01749 831069** to find out more.

CITIZENS ADVICE



For information about opening times across the Mendips visit: citizensadvicemendip.org.uk

To send an email go to **the website** and click on 'Email

Click for advice' and emails will be answered within five working days. You can also ring for telephone advice on **0808 2787 842** Monday - Friday 10 am – 4 pm.

Local office is located at Highfield House, Shape Mendip Campus, Cannards Grave Rd, BA4 5BT.

Please note following recent government announcements this and all other Citizens Advice Offices are closed for face to face appointments until further notice.

EMERGENCY CONTACTS

| | |
|-----------------------------|---|
| Housing | Mendip District Council 0300 303 8588 Shelter 0808 800 4444 |
| Employment | ACAS 0300 123 1100 |
| Domestic Abuse and Violence | SIDAS 0800 69 49 999 |

SAMARITANS

Telephone - 116 123

Email - jo@samaritans.org

Website - www.samaritans.org

Write - Freepost RSRB-KKBY-CYJK

Chris

PO Box 9090

STIRLING FK8 2SA

The Samaritans offer a free and confidential listening service. They can be contacted **24 hours a day 365 days** a year. It is free to phone and the number will not come up on the callers' phone bill.

People contact the Samaritans with all sorts of concerns. What might be a small issue to you, may be huge to someone else. You could be going through something new or have been struggling to cope for some time. Either way, the Samaritans are there if you feel you need some extra support.

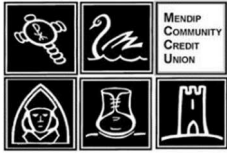
Common reasons people contact the Samaritans are:

- relationship and family problems
- loss, including loss of a friend or a family member through bereavement
- financial worries
- job-related stress
- college or study-related stress
- loneliness and isolation
- depression
- painful and/or disabling physical illness
- heavy use of or dependency on alcohol or other drugs
- thoughts of suicide

If what's getting to you isn't on this list, please still get in touch.

MENDIP COMMUNITY CREDIT UNION

www.mendipcommunitycu.org.uk



Credit unions enable people in a community to come together to save ethically and to borrow money at competitive rates.

This is a mutual organisation, meaning there are no external share-holders and we pay out any surplus at the end of each year as a dividend to our members. It also means that each adult member has one vote at the AGM, which sets the direction we take.

100% of members' savings are protected by the Financial Services Compensation Scheme. Like all other credit unions, MCCU is authorised by the Prudential Regulation Authority and regulated by the Financial Conduct Authority and the Prudential Regulation Authority.

See the website for further information or contact:

Answerphone: **0800 622 6036**

Address for post: FREEPOST MENDIP CREDIT UNION

Email: info@mendipcommunitycu.org.uk

At the moment we are not signing up new members other than in exceptional circumstances.

Please note: All service points shown below are currently closed until further notice

Service points locations and previous opening times:

Salvation Army Hall, 21 Commercial Road,

Shepton Mallet, BA4 5BU

Tuesday 10 am -12 noon

Frome Library

Wednesday 10 am – 12 noon.

Crispin Centre, Leigh Road, Street, BA16 0HP

Friday 10 am - 12 noon

Frome, Glastonbury & Wells libraries

Saturday 10 am -12 noon

Answerphone: Freephone **0800 622 6036**

Address for post: FREEPOST MENDIP CREDIT UNION

Email: info@mendipcommunitycu.org.uk

IMAGES LTD HAIR SALON

For all your hair requirements

Ear piercing available

OAP discount days

Over 35 years' experience

51a High Street, Shepton Mallet

01749 345944

SOMERSET COMMUNITY MEALS

This service delivers frozen meals every two weeks. They must be stored in a freezer and can be reheated in a microwave. Dietary, religious and ethnic needs are catered for.

The service is for older people and people with disabilities who have been assessed as needing help to ensure they have regular cooked meals.

The service is provided at a discounted rate menu by Wiltshire Farm Foods.

You can apply for this service by emailing

adults@somerset.gov.uk or phone 0845 345 9133, Monday to Friday between 8 am and 6 pm and Saturdays between 9 am and 4 pm.

Nick Brine

Car and Commercial repairs

Unit 6 Evercreech Junction

* Servicing and repairs on Cars, Vans, Horseboxes, Campers and Lorries

* MOTs by appointment

* Parts available for all makes and models

* Now stocking parts for off road motorcycles and quads



Please ring for further details

Tel: 01749 831036

Mobile: 07736 972042

REGISTRAR OF BIRTHS, DEATHS &

MARRIAGES

www.somerset.gov.uk

Mendip Hub, Cannards Grave Road,
Shepton Mallet, BA4 5BT

Open

Monday to Friday 9.30 am - 4.00 pm

Please ring or email to make an appointment.

Email: somersetregistrations@somerset.gov.uk

Tel: **01823 282251**

From 29 March Shepton Mallet Registration Office will be allowed to host ceremonies with a maximum of 6 attendees. Between 12 April and 21 June, the Government plan further increases in attendee numbers.

SHEPTON MALLET LIBRARY

2 The Market Place, Shepton Mallet BA4 5AZ

After a substantial makeover, Shepton Mallet library will re-open in mid-June with longer opening hours and a new look!

New opening hours:

| | |
|----------|-----------------|
| Monday | 9.30am – 5 pm |
| Tuesday | 9.30am – 5pm |
| Thursday | 9.30am – 5pm |
| Friday | 9.30am – 5pm |
| Saturday | 9.30am – 1.30pm |

Library membership entitles you to borrow a wide range of items including books, audio books, e-books, e-magazines, e-comics and DVDs and you can also request and renew items, access printing and the internet via our public computers, and free WiFi. We also offer an iPad loaning scheme for jobseekers and people looking to develop new skills for employment who can borrow an internet-ready iPad for up to 6 weeks.

For more information about the library, go to www.somerset.gov.uk/libraries or follow us on Facebook, Somerset Libraries Shepton Mallet, or email shmlib@somerset.gov.uk

MOBILE LIBRARY

The Mobile Library visits Evercreech every four weeks on Thursdays stopping at **Gartons Mead**, 12.12 – 12.55 pm.

If you are housebound the library may be able to arrange for books to be delivered to you by the RVS. For more information, phone **0300 123 2224** or visit the libraries website.

Faerie Kid Goats' Milk Soap



Unscented,
or with
a hint of
various
essential oils
and fragrances.

Quality
handmade soaps
incorporating the
natural goodness
of full cream milk
from small local
goat herds.



Now available from the
One Craft Gallery
in Shepton Mallet (*where you will also
find Peter's handmade folk instruments*)

or by phoning Peter or Carol
on 01749 347823

www.facebook.com/faeriekidsoaps

THE BELL BOOK CLUBS

The first group (BBC1) started in late 2010. In 2014 BBC2 was established, in September 2015 BBC3 started and in February 2017 BBC4. Groups usually meet in the Bell Inn, BBC1, 2 and 3 at 7.30 pm, BBC4 at 7.00 pm. We discuss the book we have just read and then eat a delicious supper cooked by Abbi, the chef at The Bell. All books are obtained from Shepton Mallet Library and we thank Janet Rundle for organising us. Due to the current Covid-19 restrictions some groups are not meeting, and others are holding Zoom meetings. Anyone interested to know more, please contact:

Daryl Issitt **07398 155606**

EVERCREECH CREATIVE WRITERS

Have you ever wanted to write? Stories of any kind - fiction, non-fiction, history or family history, tall tales or short flashes, poetry or maybe even songs?

We're a new group of all kinds of writers, from beginners to more experienced, gathering together for inspiration, support, encouragement and time to write.

We haven't been meeting recently due to Covid-19, but if you're interested in joining us in any way at all, please do get in touch.

For more information, contact Jenny on **07766 817703** or EvercreechCreativeWriters@gmail.com

EVERCREECH PLAICE

HIGH STREET, EVERCREECH

TEL: **01749 830395**

*** Fresh Fish & Chips ***

*** Home Made Dishes ***

*** All Cooked Fresh to Order ***

At present due to Covid-19 we are operating on reduced hours. This ensures our produce is fresh and there is demand for our products.

We recommend you phone your order in advance. For those who don't pre-order please maintain social distancing. When busy, pre-orders will take priority.

Opening hours:

| | | |
|----------|--------------|----------------|
| Thursday | | 5.00 - 8.00 pm |
| Friday | 12.30 - 1.30 | 5.00 - 8.00 pm |
| Saturday | 12.30 - 1.30 | 5.00 - 8.00 pm |

Thank you for your continued support

REFUSE COLLECTIONS - EVERCREECH

All enquiries Tel: **0300 303 8588**

Refuse collection is every 3 weeks

Food waste and Recycling will be collected every Friday. Please sort items for recycling and note what can and cannot go in the recycling boxes and blue bag. For information on waste collections go to **www.somersetwaste.gov.uk** where there is also an opportunity to sign up for regular newsletters by email. See also recycling services on **page 17**.

Always put out bins by 7 am and no earlier than the night before your collection day please.

Bank Holidays Usual Friday collections may be changed following Bank Holidays.

Go to **www.mendip.gov.uk/collectiondate** for up to date information.

Garden Waste (subscribers only)

Wheeled Bins (£57.20 per year, from May) or compostable paper sacks (10 for £28.30) will be collected every alternate Friday.

There are no garden waste collections in the two weeks after Christmas. Please see:

www.somersetwaste.gov.uk/garden-waste-collections/ for collection dates. Garden waste collections may be suspended during periods of severe weather.

Special Collection of Bulky Household Waste

Bulky household items (excluding fixtures and fittings) can be collected by the Council upon request. This is a chargeable service. Call **0300 303 8588**.

Illegal Fly Tipping

If you spot anything that has been dumped, do not touch it but note its exact location and likely contents. Contact MDC on **0300 303 8588** or email **customerservices@mendip.gov.uk**. Fly tipping also includes the depositing of items around, rather than in, the recycling banks. Check for latest information at **customerservices@mendip.gov.uk**

READERS!

If you contact a local business or service after seeing it in EDIS, please let them know. It helps them to know their advert has been effective and in turn helps us to keep producing this publication free to local people.

FREEGLE AND TRASH NOTHING!

There are Freegle groups around the world, introducing people who have usable things to give away to people who can use them. There are now over 600 groups spread across the country with over four million members. Once you have joined your local group, you can create 'Offer' posts for items you want to give away, or 'Wanted' posts for items you need (as long as you follow some basic rules).

It's all about reusing and keeping good stuff out of landfill. To sign up to our local group, go to **www.ilovefreegle.org** and get started. The Trash Nothing! site is an alternative interface for existing Freegle groups making it quicker and easier to post your offers or requests. Sign up at **www.trashnothing.com**

Household Waste Recycling Centres

These sites are provided by Somerset Waste Partnership **www.somersetwaste.gov.uk** for the free disposal of household waste such as old furniture, large electrical appliances (including fridges) and some DIY waste*. Please be prepared to separate waste for recycling upon arrival. The nearest sites to Evercreech are:

Dimmer near Castle Cary Tel: **01963 351725**
Signposted from Railway Bridge on A371:

Monday, Tuesday: 9 am to 6 pm.
Saturday, Sunday: 9 am to 4 pm

Dulcote near Wells Tel: **01749 670973**:

Weekdays except Tuesdays: 9 am to 6 pm.
Saturday, Sunday: 9 am to 4 pm.

When visiting any Somerset recycling site with your household waste, your vehicle or trailer may need a permit. Both vehicle and trailer size are restricted. Permits are free, only available to Somerset residents and must be displayed on all visits. Please apply for a permit before you take your waste.

*Charges must be paid by card – not cash or cheque – at all sites for disposal of materials not classified as household waste: asbestos; gas bottles; hardcore, including stone, rubble, clay, tiles, ceramic/porcelain sinks, baths, toilets and construction materials: plasterboard (Dulcote only), soil, tyres and vehicle parts. **There is no charge for the disposal of household waste.**



Brue Computing Ltd
IT support and services
www.bruecomp.co.uk
info@bruecomp.co.uk
07789 050987

1st Class Service, including:
PC and Mac repairs
Virus and Spyware Removal
Hardware upgrades
Home installation and setup
Small Business IT support
Phone and tablet repairs

RECYCLING SERVICES

A weekly kerbside recycling collection service operates in the Evercreech and Stoney Stratton area. Collected items include cardboard, plastic bottles, paper, glass bottles, cans and aluminium foil. Aerosol cans should have any plastic parts removed and not crushed.

Since last October plastic pots, tubs and trays, food and drink cartons, Tetra Paks, and small electrical items such as kettles and toasters can also be left for kerbside collection.

Collection day is Friday. Following a single Bank Holiday, collections will be made on the following day i.e. Saturday.

For further information on the above services please visit www.mendip.gov.uk/waste

You may also use the recycling banks at Commercial Road, Shepton Mallet (Books, DVDs, clothing and shoes only).

Spectacles

Please take unwanted spectacles to an Optician who recycles, e.g. Christopher Young in Shepton Mallet.

Batteries

Kerbside collection for small household batteries. Most supermarkets and shops also have collection bins for used batteries.

Home Composting

The Somerset Waste Partnership website

www.somersetwaste.gov.uk

220 litre and 300 litre bins are available to purchase online, and currently offered at special prices for the first 1,000 Somerset residents or until 31 March 2022 whichever is soonest.

Recycling container location

A Clothes/Textiles/Shoes (in bags please) bank in aid of Dorset & Somerset Air Ambulance is in the car park behind the Village Hall.

DORSET & SOMERSET AIR AMBULANCE

Registered Charity 1078685

www.dsairambulance.org.uk

About Us: Dorset and Somerset Air Ambulance is a registered charity, established to provide relief from sickness and injury for the people of Dorset and Somerset, by the provision of an air ambulance. We receive no direct funding from the Government or the National Lottery and rely on the generosity of the public for support. Our operational costs are over £5 million a year and the approximate cost per mission is £3,000.

Since our launch in 2000 we have flown thousands of missions. We are tasked as part of the normal '999' emergency process by a dedicated Helicopter Emergency Medical Service (HEMS) desk located at Ambulance Control (paid for by the South West Air Ambulance Charities).

Our airbase is situated at Henstridge Airfield on the Dorset/Somerset border. From there we can be at any point in the two counties in less than 20 minutes. More importantly, the helicopter can, if required, then take a patient to the nearest Major Trauma Centre in the South West within a further 20 minutes.

Providing Critical Care: The clinical achievements of our team over the last few months and during the COVID-19 pandemic have been enormous. Our clinical team have faced many challenges but despite this, we are proud that we have continued to deliver pre-hospital critical care for 19 hours per day throughout this period.

Our cohort of clinicians include a mixture of Senior Emergency Physicians, Intensive Care Consultants and Anaesthetists, Specialist Practitioners in Critical Care. All form part of the air operations crew and, as part of their role, assist the pilot with navigation and operation of some of the aircraft systems. We provide a Critical Care Team, consisting of at least a Doctor and Specialist Practitioner for each mission. The doctors are predominantly drawn from NHS Hospital Trusts across the region and the Practitioners from the South Western Ambulance Service NHS Foundation Trust (SWASFT). More recently, some clinicians have joined us from further afield, broadening the skills and experience of the team.

Pilots: Our pilots are provided by Specialist Aviation Services Ltd, who operate our aircraft. They are carefully selected because air ambulance flights are typically more challenging than regular non-emergency flight services. They will have a great deal of experience in low-level operations and instrument flying.

Operational Hours: We operate from 7 am to 2 am daily, using two vital resources which include our AW169 helicopter and Critical Care Car.

Code of Conduct: Dorset and Somerset Air Ambulance is committed to maintaining the highest standards of fundraising behaviour and adhere to the standards set by the Fundraising Regulator. We are also a member of the Association of Air Ambulances (AAA).

CANINE DESIGN

Victoria Square, Evercreech

www.caninedesign.co.uk

UK Grooming School of the Year 2014

YKC Groomer of the Year 2009 & 2010

Top 3 finalist:

Grooming School of the Year 2013

UK Grooming Business of the Year 2009

Caring, professional staff

Model dogs required by our well supervised grooming trainees at highly discounted rates.

Sole UK suppliers of Demel'ex dematting spray
– voted UK Grooming Product of the Year
2013 and 2015

For an appointment:

Tel: 01749 830723

Proprietor: Lesley Garratt,
LCGI, Guild of Master Groomers

SHOP OPENING HOURS**Heathercreech Kitchen Tel: 831000**

Mon – Fri: 8.00 am to 3.00 pm

Sat: 8.00 am to 2.00 pm

Closed 1st Saturday every month**Canine Design Tel: 830723**

Monday-Thursday: 9.00 am to 4.30 pm

Friday & Saturday: By appointment only

Co-op Supermarket Tel: 830219

Every day: 6 am to 10 pm

Post Office (in Evercreech Co-op)

Normally during Co-op opening hours.

*(Shepton Mallet Post Office (in McColls, store closes at 10 pm): Mon – Sun 7.00 am to 9.30 pm.)***Evercreech Plaice Tel: 830395**

Thurs: 5 pm to 8 pm

Fri: 12.30 to 1.30 pm, 5 pm to 8 pm

Sat: 12.30 to 1.30 pm, 5 pm to 8 pm

Pharmacy Tel: 830267

Mon – Fri: 9 am to 1 pm, 2 pm to 6 pm

Sat: 9 am to 1 pm

Melita Coiffure Tel: 830536

Tues to Fri: 9 am to 5 pm,

Sat closed

Beehive Hair Studio Tel: 937470

Tues 9 am to 5 pm,

Weds 10 am to 3 pm,

Thurs 9 am to 6 pm,

Fri 9 am to 6 pm

Sat 9 am to 4 pm

SHEPTON MALLET MARKET**www.sheptonmarket.co.uk****Friday Morning 9 am – 2 pm**

Fresh Fish, Fruit & Vegetables, Bread, Cheese, Olives,
 Pet supplies, Fresh Eggs, Garden Plants, Flowers,
 High quality craft items.

Improvement works to the marketplace commenced on 19 March. The market will temporarily be located at Great Ostry Car Park, and will continue trading there for 14 weeks, or until such time as the works are completed.

**Free Parking** - Great Ostry Car Park - Fridays 10 am – 1 pm

Sunday Market normally held monthly, to restart in June 2021 if the situation allows.

www.thesheptonexperience.co.uk**EVERCREECH PARISH COUNCIL****www.evercreech-pc.gov.uk**

Rob Reed (Chair)

Mark Saunders (Vice-Chair)

Council members

Sarah Breare Michael Mercer

Barry O'Leary Lesley Parham

Rob Reed Roy Williams

Gail Wakeford Mark Saunders

1 Vacancy (currently)

Parish Clerk**clerk@evercreech-pc.gov.uk****01749 830265**

Lynn Crisp

c/o Maestone

Enfield Drive

Evercreech

BA4 6LL

Evercreech Parish Council is a non-partisan body of 9 elected members and employs a Parish Clerk and a Responsible Financial Officer. As well as the village of Evercreech, the Parish includes the surrounding hamlets of Chesterblade, Southwood and Stoney Stratton.

Parish Council meetings are usually held on the first Tuesday of each month in the Village Hall, commencing at 7 pm. Additionally, there is the Annual Parish Meeting, where community organisations that the council have supported during the year present their annual reviews to the parish. It takes place in April each year and is a less formal event to which all members of the public are welcome.

Website:

The Parish Council website (above) is interactive and provides full details of the Parish Council, its meetings and resources and a picture gallery. The planning section offers the opportunity to link to Mendip District Council Planning to view applications and comment. It has links to Somerset County Council, Mendip District Council and Somerset Waste Partnership websites, where members of the public can report and request action on subjects such as noise, pollution, anti-social behaviour, waste and recycling, roads, pavements and street lighting. In addition, there are links to Evercreech C of E Primary School, Evercreech Surgery and St Peter's C of E Church. The site can be accessed at the above web address.

PLUSS**www.pluss.org.uk**

If you have been out of work for a while and have a health condition or disability, Pluss can help. Pluss is an award-winning Community Interest Company that supports thousands of people each year to find work and achieve a career. Pluss will provide practical support, tailored to your skills and ambitions, as well as support once you're in work.

For information about local services visit the above website, call freephone 0800 334 5525 or email:

employment.bureau@pluss.org.uk

LOCAL POLITICAL REPRESENTATIVES

Member of Parliament: David Warburton (Conservative)
 Parliamentary Office: **02072 195229**
 Constituency Office: **01373 580500**
 Email: david.warburton.mp@parliament.uk

COUNTY AND DISTRICT COUNCILS

Somerset County Council

County Hall, Taunton TA1 4DY
 Contact: **0300 123 2224** www.somerset.gov.uk

Mendip District Council

Cannards Grave Road, Shepton Mallet. BA4 5BT
 Contact: **0300 303 8588** www.mendip.gov.uk

- Chair: Helen Sprawson-White
- District Councillor for Creech: Barry O'Leary

SOMERTON/FROME CONSERVATIVE ASSOCIATION (CREECH BRANCH)

www.somersetconservatives.org.uk/somerton-frome-conservatives

Chairman: John Parham **01749 931513**
 Treasurer: Peter Bradshaw
 office@somersetconservatives.com

LABOUR PARTY

www.labour.org.uk

Party Regional Office - South West:
 Unit B, Bradley Pavilions, Pear Tree Road
 Bristol BS32 0BQ
 Email: southwest@labour.org.uk

CND AND PEACE GROUP

www.midsomcnd-peacegroup.org.uk
 Email: info@midsomcnd-peacegroup.org.uk

Mid Somerset CND and Peace group works to raise awareness in our area about the continuing threat of nuclear arms in the UK and worldwide and also ways to find peaceful solutions to conflict. We hold campaign events, commemorations and community events.

Visit our website for current information about our campaigns and how you can be involved:

Chair - Bevis Miller
Secretary - Julia Adams

READERS!

If you contact a local business or service after seeing it in EDIS, please let them know. It helps them to know their advert has been effective and in turn helps us to keep producing this publication free to local people.

GREEN PARTY

www.greenparty.org.uk
www.southwest.greenparty.org.uk/counties/somerset

The Green Party want to combat the threat of climate change by investing in renewable energy, and build a fairer more equal society.

For more information visit the website or contact the Regional Coordinator – Ewan Jones:
coordinator@southwest.greenparty.org.uk

REGISTERED OSTEOPATH

TREVENEN PASCOE

BSc. (Hons.) Ost. Med. ND.



OSTEOPATHY

Gentle effective treatment for the whole body
FOR PEOPLE OF ALL AGES

**42 High Street, Shepton Mallet,
 Somerset BA4 5AS
 Tel: 01749 342 594**

SOMERTON/FROME LIBERAL DEMOCRATS

The Mendip South branch of the Somerton & Frome Liberal Democrats comprises the Creech, Ditchat & Pennards and Baltonsborough & Butleigh wards of Mendip District Council. The Officers are as follows:

Chairman: Robert Reed, Melrose, Oxford St, Evercreech.
 Tel: **01749 830027**
 Email: rob_reed@btinternet.com
 Secretary: Ross Kessell
 Tel: **07805 441509**
 Email: rossakessell@gmail.com
 Treasurer: Barry O'Leary
 Tel: **01749 321421**
 Email: Evercreech.barry@icloud.com

Do you believe in sustainable communities, local jobs and facilities, the equality of opportunity and the protection of our precious environment? If so, why not join the Liberal Democrats and support our campaigning to promote the importance of these issues all year round?

Please contact any of the above for further details at any time.



Alham Vale Benefice

St Peter, Evercreech, St Mary the Virgin, Chesterblade, St James, Milton Clevedon
The Blessed Virgin Mary, Batcombe, St Mary & St John, Lamyatt, and St Mary Magdalene, Upton Noble.

alhamvalebenefice.co.uk

The *Alham Vale Benefice* is in the **Bruton and Cary Deanery**: www.brutonandcarydeanery.net
in the **Diocese of Bath & Wells**: www.bathandwells.org.uk

VICAR: Revd. Helen Drever 01749 831053 vicar@alhamvale.plus.com

READERS: Jen Richards 01749 812369 jen.ern.r@outlook.com
Rob Sage 01749 850934 robsage@uwclub.net
Anne Sear 01749 838843 sear.a@btinternet.com

LAY WORSHIP ASSISTANT: Michèle Hole 01749 830875 holemiche@aol.com

A Prayer For our Benefice

Loving God, as we travel together, we seek inspiration from the River Alham which named us.
We pray that the life-giving water of your Word will flow in our hearts and minds,
that gently but firmly we will be carried along in its current together,
that as the river winds and meanders, we too can change course to overcome the difficulties we face,
and as the river flows onwards beyond our borders, we pray that your blessings will reach out through us
into the communities we serve and beyond. **Amen**

Over the past tumultuous year many people have made walking a regular habit. Getting out into the fresh air to stretch our legs and observe the natural world has provided many of us with our daily exercise, and a welcome break from screen time and the four walls of our homes. Walking outdoors offered a precious opportunity for friends or family members to spend time together, one-on-one, during the pandemic. An added benefit of simply walking alongside each other is that the very rhythm of walking supports conversations which deepen and enrich those relationships.

Someone once said that Jesus changed the world at 3mph. In other words he did it at a walking pace, the pace of a pilgrimage not a Formula One race. And as he walked he talked and healed and encouraged and blessed. In this journey called life, walking is simply balm for the soul. May we too be healed and encouraged and blessed as we make our own pilgrimages side-by-side along the village lanes and landscape; and by moving at God's pace may we too gently change the world connection by connection at a steady 3mph.

Revd. Helen Drever

ST PETER, EVERCREECH

Churchwardens:

Geoff Hamlet 01749 830924
Eric Deyes 01749 831104

Pastoral Assistant:

Margaret Elliott 01749 830209

Members of this lively church are active in all areas of village life. The friendly congregation always welcomes newcomers and visitors.



ST MARY, CHESTERBLADE

Chapel Warden:

Sue Carden 07970 413382

This unique and beautiful little Chapel, set in the foothills of the Mendips, is part of the parish of Evercreech.



ST JAMES, MILTON CLEVEDON

Churchwardens:

Ian Broad 01749 831488
Winkie Fry 01749 831088

St James' is the "Church in the Farmyard" and enjoys a friendly, family atmosphere.



ST MARY & ST JOHN, LAMYATT

Churchwardens:

Freda Gibbons 01749 813477
Ann Skinner 01749 812103

St Mary & St John is a beautiful church with medieval origins, restored in the 19th century.



THE BLESSED VIRGIN MARY, BATCOMBE

Churchwardens:

Nigel Humphreys 01749 830091
Peter Cowling 01749 850110

The Blessed Virgin Mary, a Grade I Listed building lies at the heart of the village of Batcombe. A church has stood on the same site since Saxon times.



ST MARY MAGDALENE, UPTON NOBLE

Churchwardens:

John Deverell 01749 850688
Alex Faulkner 01749 850172

St Mary Magdalene lies in the centre of the small, scenically attractive, traditional rural village of Upton Noble.



Sunday Services across the *Alham Vale Benefice*

The Schedule for Sunday Services across the Alham Vale Benefice is currently under review and an updated version will be published in the September edition of EDIS. Meanwhile updates will be shared:

- Each week via the Alham Vale Benefice Facebook page - www.facebook.com/alhamvale
- On church notice boards each month
- In the monthly Evercreech News (see below)
- Via the weekly bulletin for Alham Vale Benefice.

If you would like to receive the weekly bulletin, please email alhamvale@hotmail.com or phone **01749 831069**



Although we cannot currently meet in St. Peter's to say **Morning Prayer** each morning we pray for people from across the Benefice who are in need of prayer for whatever reason. Of course, we can only do so if we know who needs prayer. So please feel free to pass names to the Ministry Team, with as much or as little other information as you wish.

Digital Services

Apart from services on TV and radio there are many ways of accessing services on-line.

There are many things on the Alham Vale YouTube Channel: www.youtube.com/channel/UC8pBAXbOne8SJUZOrvWoKRg

There are also resources available from the Diocese of Bath and Wells: www.bathandwells.org.uk and the Church of England including: www.churchofengland.org/more/media-centre/church-online



This phone line is available 24 hours a day and has been set up particularly with those unable to join online church services during the period of restrictions in mind; to

provide comfort and spiritual nourishment to the most isolated in our society. There are hymns, reflections, prayers and even a guide to help get a good night's sleep.

Baptisms

Please contact Hilary Foster on **830664**, piccolo6054@yahoo.co.uk

St. Peter's Church Flower Rota

The flower rota is once again up and running and from May we will enjoy fresh flowers in St Peter's once again. The rota will be published each month in the Evercreech News. For more information on flowers at St Peter's please contact Margaret Elliott **830209**, or Hazel Fry **830393**.

Weddings and Calling the Banns

Please contact: Revd. Helen Drever

Funerals

Social distancing and quarantine measures may mean that you can't go to the funeral of a family member or friend. The Ministry Team can offer to support you at this time, whether through phone calls, or suggesting ways of marking the funeral at home, thus being with other mourners in spirit, if not in body.

Children & Young People

After closing due to Covid-19 regulations, Little Fishes resumed on 19 April (see page 38).

Ministry to the Elderly

If you require, Holy Communion can be taken to your home. Please contact Revd Helen Drever. We are unable to hold services in the Glen at the moment.

Home Discussion Groups

We cannot meet in people's homes at present, but at least one group is meeting via videoconference. If you are interested in joining a group either via videoconference or face to face when this is possible, please contact Anne Sear on **838843** or sear.a@btinternet.com

Evercreech News

The Parish Magazine covering Evercreech, Chesterblade, Milton Clevedon and Lamyatt.

This monthly magazine is produced for the whole community. It includes information about local events and reports from local societies. It is now available electronically, by post or collected from St Peter's Church.

If you would like to subscribe, please phone **01749 831069** or email alhamvale@hotmail.com

Coffee Mornings

The monthly Coffee Mornings in St Peter's Church will be resumed as soon as it is safe to do so, in line with government guidance.

St Peter's Church – an Inclusive Church

www.inclusive-church.org



St Peter's Church has signed up to the vision of Inclusive Church: which says, *"We believe in inclusive Church – a church which celebrates and affirms every person and does not discriminate. We will continue to challenge the church where it discriminates against people on grounds of disability, economic power, ethnicity, gender, gender identity, learning disability, mental health, neurodiversity, or sexuality ... We believe in a Church which, in the power of the Holy Spirit, allows all people to grasp how wide and long and high and deep is the love of God."* Our goal is to offer a radical welcome to all, but we are aware that we are on a journey. Please tell us if we make mistakes, so we know how we still need to improve.

St Peter's Church Fabric Fund

St Peter's is a magnificent Grade I listed church of which Evercreech is very proud. As such there are always things that need doing to maintain and enhance our church. St Peter's is very grateful to the Village and surrounding area who generously support. You may not be a church goer, but all can value the presence of a beautiful church in the village, which is there for everyone.

If you would like to make a donation towards the fabric of St Peter's Church please put your donation in an envelope clearly marked 'St Peter's Fabric Fund' then you can be sure your donation is put into the ring-fenced fabric fund, rather than used for day to day running expenses. Your donation can be given to the Churchwardens, put in the wall safe by the font or sent to our Treasurer: Rob Sage, Portway Farm, Batcombe, Shepton Mallet BA4 6BR.

(Cheques payable to Evercreech PCC please)

Music

Covid RECOVERY? Music is the answer!

As we move step by step out of the worst of the pandemic, we are keen to revive and re-establish the music at St Peter's. We are looking to recruit keen singers (all voices, preferably with reading ability and some choral experience) to rebuild a regular choir for St Peter's, and the Benefice. We also aim to form a children's choir. The intention would be to celebrate a Return to Life with events in the week that starts with the National Music day on 21 June and ends with St Peter's Day on 29 June. Keen singers (SATB), children (and their parents), instrumentalists, and anyone who wants to be involved, or can offer practical or financial support are invited to get in touch and become part of this programme. Please get in touch with the Director of Music: Graham Coatman:

grahamcmusickmeister@gmail.com or 07979 866303

Pete's Fruit'n'Veg

Pete's Fruit'n'Veg was not able to run in 2020 but we hope it will be back in the summer.

Bells

St Peter's has a famous ring of 10 bells. Thanks to the generosity of many people the bells were extensively refurbished in 2015/16. The single service bell has been calling villagers to worship since before the Reformation and is still chimed for morning prayer and funerals. More details on the bells at St Peter's can be found at www.bath-wells.org/towerselect.php?DoveID=EVERCREECH

The Ellacombe Chiming Apparatus has often been used to sound the bells during the periods of lockdown. Due to current Covid restrictions and risks, only a limited number of ringers can enter the small ringing room. Although we would love to have more recruits, the training of new ringers is not possible at present as initial training is hands-on and face-to-face. For more information on the Evercreech Bells or clock contact John Dunford:

01749 830672 or evercreech@bath-wells.org

Hamish's Patch

The PCC has renamed this to honour the memory of Hamish Craig, who provided much of the inspiration for the conservation and biodiversity area in the corner of the churchyard. Inside St Peter's church is a folder containing factsheets, written by Hamish, about wildflowers found there. We leave the flowers to grow and only mow once the seed has set, in July or August. This encourages a range of wildflowers to flourish. Our habitat piles provide a home for small mammals and invertebrates, so helping to maintain a food supply for birds, for whom there are nesting boxes.

St Joseph's, Mufulira

St Peter's has a link church in Zambia, St Joseph's, Kamuchanga Parish, Mufulira, where there is a lot of poverty, but vibrant faith. Our link is part of the longstanding diocesan partnership with Zambia. Many schools also have links with Zambia, and Evercreech Primary School is linked with Kamuchanga Primary School. The main focus of our link is to learn from each other and to pray for each other, especially in these worrying times of a global pandemic. We have welcomed visitors from St Joseph's, most recently Joseph Mwenya who is now training for ordination at the Anglican seminary in Kitwe, Zambia.

When I visited St Joseph's I was warmly welcomed. Thanks to technology we keep in regular contact, sending messages and photos via WhatsApp and email. We send some financial support to St Joseph's, helping with church building projects, including the toilet block, an important facility in an area where many houses do not have running water. St Joseph's has land around the church where they are putting up shelters (mainly from the sun, but also from rain in the rainy season) for mid-week activities, youth groups, etc. and they run a nursery school to serve the community. They have an ambitious plan to extend and modernise the church building.

Anne Sear

Men's Breakfast

This will resume when it is safe to do so and in line with government guidance and hopefully from June 2021. For an update contact Geoff: 831399, g.hewitt957@btinternet.com

CATHOLIC CHURCH

(Diocese of Clifton)

Registered Charity No. 1170168



St Michael's Catholic Church,
Park Road, Shepton Mallet, BA4 5BP
Email: sheptonmallet.stmichael@cliftondiocese.com
Website: www.stmichaelshepton.co.uk

St Michael's is part of the 'Community of Our Lady of Glastonbury' at present comprising two priests serving four parishes: Shepton Mallet, Glastonbury, Wells and Cheddar. They live in Glastonbury following the rule of St Benedict and it is hoped in future the community will attract vocations and expand.

Parish Priests: Fr Bede Rowe and Fr Anselm Redman,
St Mary's Presbytery,
Magdalene St,
Glastonbury, BA6 9EJ

Tel: **01458 835931** (Admin Office)

In case of emergency, please call: Fr Bede or Fr Anselm at
Our Lady St Mary of Glastonbury on 01458 832203

During the Covid-19 Pandemic a new schedule of Mass times has been arranged to allow for Social Distancing within each church and this, together with the now familiar Covid procedures, aims to make parishioners feel as safe to attend Mass as possible. However, during the pandemic there is no obligation to attend Sunday Mass and many vulnerable people have not returned since March 2020.

Sunday Mass: Sunday 9am

Weekday Mass: 10am on Tuesday

Rosary with the Legion of Mary in church on Fridays 10am.
Confessions: before Mass or on request.

All times are subject to change. The weekly bulletin with up to date information is posted on the website and at the entrance to the Parish Room behind the church. Sadly all social and fundraising events are suspended.

Parish Room St Michael's has a pleasant, light and airy meeting room behind the church in Shepton Mallet which has recently been fully refurbished and awaits a time when all bookings will again be permitted. For more information please telephone Jacky on **01749 830695**.

Parking St Michael's has a car park in front of the church in Park Road. There are 14 numbered spaces which are let out to private individuals who use them during the week. Spaces are currently available. Enquiries may be made to the parish email address above. We must remind visitors to St Michael's to not park in the numbered spaces Monday to Saturday.

READERS!

If you contact a local business or service after seeing it in EDIS, please let them know. It helps them to know their advert has been effective and in turn helps us to keep producing this publication free to local people.

EVERCREECH RELIEF IN NEED

Charity Commission Registered number 205527

The trustees of Evercreech Relief in Need are able to make modest grants to help people in the village. If you, or anyone you know, gets into financial difficulty during or after the current Corona (Covid-19) virus emergency, anyone living in the parish of Evercreech is most welcome to apply, as shown below, for help.

We will try to help quickly where needed but the overall sum we can give is limited and we may need to delay some grants until we see the total amount of help requested so that we can allocate the money available as fairly as possible.

All applications are considered in the strictest confidence by the trustees.

The current trustees are:

Vicar and Churchwardens of St Peter's Evercreech:

Parish Council Nominees: David Lindsay,
Mollie Purse,
Edward Porter &
Roy Williams.

Applications for assistance should be sent by letter or email please to:

The Chairman: Dr. David Lindsay, Southwell House,
Shapway Lane, Evercreech BA4 6JS
dlandgl@btinternet.com

or to The Clerk: Michèle Hole, Bowns View,
Weymouth Road, Evercreech BA4 6JB
holemiche@aol.com

Picnic in the churchyard!



This year the festival of St Peter the Apostle falls on Tuesday 29 June. In Evercreech, St Peter's are planning to hold a 'Peter's Picnic' to celebrate this day – on

Saturday 26 June.

This event also comes close to Midsummer's Eve, which is on 24 June – so we should have a lovely long day, with events running into the evening (weather permitting!). We don't know what the Covid-19 restrictions will be at the time but we will work within these to bring everyone a fun day!

If you would like to help, get involved or have an ideas or suggestions please let Janet Rundle know:

old-saddlery@talk21.com or 01794 830800

THE CHILDREN'S SOCIETY

A Voluntary Society of The Church of England and The Church of Wales



The Children's Society is a national charity working to transform the hopes and happiness of young people facing abuse, exploitation and neglect. The charity supports these young people through their most serious life challenges and campaigns for the big social changes that will improve the lives of those who need hope most.

The Society concentrates on young people aged 10 - 18 who face the greatest danger, discrimination or disadvantage in their daily lives; children who sleep rough on the streets, children who flee conflict abroad and arrive alone in this country, children caught in a cycle of crime or children isolated by disability. It gives these young people hope by providing direct help and support.

As well as supporting change at an individual level through its direct programmes of work, the Society aims to effect systemic change by influencing legislation and government practice, and to effect a positive shift in public attitudes towards children and young people.

Over the years Evercreech has generously supported the work of The Society through different fundraising events including collection boxes, coffee mornings, sale of Christmas cards and Christingle services. Despite the problems of 2020, the total raised was a splendid £486.84.

The Society helps and protects young people in many ways, too many to list here, but you can see the work it does on their website www.childrenssociety.org.uk

If you would like a collection box to help the work of the Children's Society, we would love to hear from you. Please contact: Janet Rundle **01749 830800** or email: old-saddlery@talk21.com

SHEPTON MALLET CARNIVAL sheptonmalletcarnival.org.uk

Due to Covid-19 the next date is 16 November 2022. Visit the website for more information.



GARTONS MEAD

Due to Covid-19 the hall is closed until further notice, however the usual programme is:

Every Monday - Games Evening 6.30 pm – 9.00 pm
Every Tuesday - Coffee Morning 10.30 am
Every Thursday - Bingo 6.00 pm
Every Friday - Games Evening 6.30 pm - 9.00 pm

For further information on these and various other activities please contact Frank Brown on **01749 830634**

THE OLD STORES STUDIO

www.theoldstoresstudio.wixsite.com/theoldstoresstudio

www.facebook.com/theoldstoresstudio

www.instagram.com/theoldstoresstudio



The Old Stores Studio is a unique **ART STUDIO AND VENUE** based in a beautiful red brick, Victorian shop - formerly The Old Co-op - opposite St Peter's Church in the heart of Evercreech.

Our main aim is to encourage **INCLUSIVE ART, CRAFT AND CREATIVE LEARNING** and participation and support artists and makers to share their creativity, skills and knowledge through regular groups, workshops, courses and events.

We are a non-profit **Community Interest Company** and deliver an inclusive, subsidised programme of seasonal creative activities, projects & events throughout the year, including Evercreech Jack in the Green in May and a Christmas Community Event in December. We are a registered learning centre and follow up to date guidelines for educational settings to keep everyone safe during our artist and maker led sessions.

We are supported by SS&L, Somerset Community Foundation and The National Lottery to offer **CREATIVE COMMUNITY WORKSHOPS** as well as a weekly:

BYB (bring your baby)

Art and Craft Group

and **Woolly Wednesday** a textiles craft group.

Our groups are held in term time for all ages and abilities, low cost or **FREE** and everyone is welcome.

Our up and coming **PROGRAMME** is listed on the chalkboard in our window or see our social media and website for further details and to book. We hope to see you soon!

To find out more get in touch with Nik or Maria at: theoldstoresstudio@gmail.com

Foot Health Practitioner

S.A.C.Dip.

**offering a
Toe Nail Cutting Service
for £20**



Contact Tracy

on

Tel: 01749 938712

Mobile: 07787 932416

EVERCREECH WI



We meet at the Village Hall on the second Tuesday of the month, at 7:30 pm, for our main meeting - plus other things during the month, like stitch and chat, skittles, carol services, outings and more.

Forthcoming meetings we hope to hold:

- 8 June - Home spun Crafts: Cards, Jewellery & Flowers
- 13 July - Brian Freeland – View from the wings
- 10 Aug - Outing
- 14 Sept - Parlour games
- 12 Oct - Sue Carden – Hot Air Balloon Pilot
- 9 Nov - Home spun Christmas Crafts

Visitors are always welcome, please contact us beforehand, to check for any restrictions.

For more information please call President Maxine Clinton **01749 838911**; Secretary Helen Jenkins **01749 831268** (evenings) or email helen.j.jenkins@btinternet.com

MID-SOMERSET FLOWER CLUB

Under normal circumstances we meet in Evercreech Village Hall on the second Wednesday of the month at 2.00 pm, with the exception of January. There is a Practice Meeting in April, an Evening Open Meeting in June and usually a visit in July to either a Flower Festival or garden. There is no meeting in August.

We have not been able to meet due to Covid-19, however we hope to meet again in September 2021. To confirm whether this meeting is taking place please contact Margaret Elliott on **01749 830209** nearer the time. Do hope everyone is keeping safe and that we can all meet again soon.

Members subscriptions are due in November and cost £28 per annum and for visitors it's £5.00 per meeting.

If you love flowers and enjoy arranging them or you would like to learn more about arranging, we would be pleased to see you at a meeting. We have a NAFAS demonstrator or speaker at our meetings so come along, sit back, relax and enjoy watching the demonstrator and maybe you will win one of their arrangements in the raffle.

We are a very friendly club and welcome you to come and join us. Tea and homemade cake are served at the end of the afternoon.

EVERCREECH ALLOTMENT ASSOCIATION

Evercreech Allotments are located at Weston Town Playing Fields and we currently have 31 large and small plots. Members' experience ranges from fifty years plus to absolute beginners and all are welcome. We grow everything from potatoes and onions to artichokes and cut flowers. The allotments benefit from their own water supply. We have full, half and quarter plots available.

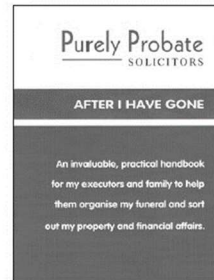
For more information, please contact:

Bron Cooper, Chairman - **830653**

Caroline Honner, Secretary - **07949361595**

Wills, Probate, Power of Attorney

A Practical Handbook for Organising your Affairs



"After I have Gone" is an invaluable, practical handbook we give to all of our Will clients. It contains a number of questions to answer. For example, you will describe the type of funeral you would like, give details of your assets, and explain what should happen to your pets.

Your executors and family will find it extremely helpful.

"Well done Judith. You have done the world a big favour in producing a readable guide to a delicate subject"

Judith Derbyshire

01458 850 146 jd@purelyprobate.co.uk

Purely Probate
SOLICITORS

Purely Probate Solicitors, Lower Farm Offices, West Bradley BA6 8LT



Qualified Florist located in Evercreech offering beautiful bouquets, weddings, floral arrangements and funeral tributes.

Please call **07905 090415** or email tinalamb@hotmail.co.uk to discuss your requirements.

Find us on Facebook, Instagram and on evergreenfloral.co.uk.

Free delivery to Evercreech, surrounding areas charged at a reasonable rate.

DIARY

Events are subject to any changes in government guidance relating to Covid-19. For all meetings and events listed here, please keep an eye out on Facebook for updates or the notice board outside the Co-op for any last-minute changes.

| Month/Day | Day | Time | Event |
|------------------|-----|--------------|---|
| MAY | | | |
| Saturday | 1 | 10 am – 2 pm | Acorns Preschool Yard Sale – around the Village – page 32 |
| | 1 | 2 pm | Evercreech Show Society Plant Market, Queen's Road Playing Field – page 27 |
| Monday | 3 | | BANK HOLIDAY |
| Tuesday | 4 | 7 pm | Evercreech Parish Council Meeting – page 18 |
| Monday | 31 | | BANK HOLIDAY First day of holiday for Evercreech Primary School |
| JUNE | | | |
| Tuesday | 1 | 7 pm | Evercreech Parish Council Meeting – page 18 |
| Monday | 7 | | Back to school for Evercreech Primary School |
| Monday | 7 | 10 am | Evercreech Walking Group – Page 29 |
| Tuesday | 8 | 7.30 pm | WI – Homespun crafts, cards, jewellery & flowers – page 25 |
| Saturday | 26 | | Picnic in the churchyard – page 23 |
| JULY | | | |
| Saturday | 3 | 2 pm | Village Hall re-opening event – page 46 |
| Monday | 5 | 10 am | Evercreech Walking Group – page 29 |
| Tuesday | 6 | 7 pm | Evercreech Parish Council Meeting – page 18 |
| Saturday | 3 | 2 – 5 pm | Village Hall re-opening – page 46; Film (reservation needed) – page 30 |
| Tuesday | 13 | 7.30 pm | WI – Brian Freeland – View from the Wings – page 25 |
| Thursday | 22 | | Inset day for Evercreech Primary School |
| Friday | 23 | | Inset day for Evercreech Primary School |
| Monday | 26 | | First day of holiday for Evercreech Primary School |
| AUGUST | | | |
| Tuesday | 3 | 7 pm | Evercreech Parish Council Meeting – page 18 |
| Tuesday | 10 | 7.30 pm | WI – Outing – page 25 |
| Sunday | 15 | | Mid Somerset Show – page 41 |
| SEPTEMBER | | | |
| Saturday | 4 | 1.30 pm | Annual Village Show – page 27 |
| Monday | 6 | | Back to school for Evercreech Primary School |
| Tuesday | 7 | 7 pm | Evercreech Parish Council Meeting – page 18 |
| Monday | 6 | 10 am | Evercreech Walking Group – page 29 |
| Tuesday | 14 | 7.30 pm | WI - Parlour games – page 25 |
| Tuesday | 21 | 7.30 pm | History Society talk Healthcare in Evercreech – page 35 |
| OCTOBER | | | |
| Monday | 4 | 10 am | Evercreech Walking Group – page 29 |
| Tuesday | 5 | 7 pm | Evercreech Parish Council Meeting – page 18 |
| Tuesday | 12 | 7.30 pm | WI – Sue Carden – Hot Air Balloon Pilot – page 25 |
| Tuesday | 19 | 7.30 pm | History Society talk The Railway at Evercreech - page 35 |
| Friday | 29 | 7.30 pm | Castle Cary Choir - 'Welcome Back to Normality' concert– page 43 |
| NOVEMBER | | | |
| Tuesday | 2 | 7 pm | Evercreech Parish Council Meeting – page 18 |
| Tuesday | 16 | 7.30 pm | History Society talk Evercreech Archives – page 35 |



The Evercreech Show Society puts on the
Annual Village Show
This year's Show will be on **Saturday 4 September 2021**

We would welcome new committee members or event organisers, to expand our small team.

Schedules will be available in various locations round the village, from committee members and online on our website: **evercreechshowsociety.uk**

Everyone in the village and further away is welcome to take part in the show:-

- Enter your produce, baking, arts and crafts
- Become a Member or Patron of the Show
- Help at the Show or with fundraising during the year
- Just come and enjoy the best Village Show in Somerset.

If you would like to join the Show Society or find out more, contact Secretary Helen Jenkins, on **831268**, Membership Secretaries Andrew & Jacky Tucker on **830695** or email **evercreechshow@aol.com** or visit our membership stand at one of our events.

Future Events

PLANT Market

Saturday 1 May 2021

Due to Covid-19 restrictions, this will not be in the Village Hall this year but on the Queen's Road Playing Field from 2 pm

An ideal opportunity to buy a wide selection of quality bedding plants, vegetable plants and shrubs.

Hand sanitiser will be available. Please wear a face mask and observe social distancing.

ANNUAL VILLAGE SHOW

Saturday 4 September 2021

Sports Ground, Weston Town

From 1.30 pm. Marquee opens at 2.30 pm

ROYAL NATIONAL LIFEBOAT INSTITUTE

www.rnli.org

Volunteer lifeboat crews provide a 24-hour rescue service in the UK and Ireland. Flood Rescue Team helps those affected by flooding. RNLI crews and lifeguards have saved over 142,700 lives since 1824. The RNLI is more than a rescue service. They influence, supervise and educate people too. Community Safety Teams explain the risks and share safety knowledge with anyone going out to sea or to the coast. And international teams work with like-minded organisations to help tackle drowning in communities at risk all around the world. For more information visit the website.

EVERCREECH FRIENDSHIP CLUB

"Where friends are made"



Unfortunately for the past year we have been unable to hold our monthly meetings, which have all been cancelled. Now into May and things look a little brighter on the horizon. With all members now having had their covid-19 vaccination, there is a glimmer of light at the end of this very long tunnel. Hopefully by late summer we will be able to start some sort of "get-together". All members will be informed when our club will be able to start again, in the meantime please take care and stay safe.

The restart date will be confirmed by e-mail, telephone and notices placed in the village.

At every meeting we have a raffle, tea and biscuits, with greeting cards at reduced prices for members.

Are you over 55 years young? Just arrived in the village or have been here many years? Why not come along to our monthly meetings, it's warm, friendly (that's where our name comes from) good speakers and activities. We have a good old chat and a laugh (the best medicine!).

Our meetings start at 2 pm and finish at 4 pm. If you would like more information, or a programme of forthcoming events please contact the Chairman Edward Porter on **830015**, or the Secretary Freda Boyce on **830703**, or our treasurer Elaine Woodford **83795**

Phillips Tyres



Castle Cary

TYRE, BATTERY AND WHEEL SPECIALISTS

We fit Exhaust Systems

Laser Four Wheel Alignment

(Tracking) by appointment

Let us quote you for your Car,

Commercial & Agricultural Requirements

01963 350243

Opening Hours:

8.30 am – 5.30 pm Mon-Fri

8.30 am – 2.00 pm Sat

Petrol/Diesel Sales:

8.30 am - 6.00 pm Mon-Fri,

8.30 am - 2.00 pm Sat



**THE ROYAL
BRITISH LEGION
(RBL)**
Evercreech Branch



Formed in 1933, the RBL Evercreech Branch aims to commemorate Remembrance, to support past and present members of the Armed Forces and their families and to raise awareness of the network of support available.

This last year has been difficult for many of us and for some even harder with the restrictions and lockdowns leaving many isolated and lonely or unable to get the help they desperately need. If you, or someone you know is struggling, please reach out to one of the following:

Support available:

Royal British Legion - call **0808 802 8080** or email:
www.Britishlegion.org.uk/get-support

Veterans Gateway - call **0808 802 1212** or visit:
support.veteransgateway.org.uk/

NHS (Op Courage) – visit:
www.nhs.uk/nhs-services/armed-forces-and-veterans-healthcare/veterans-nhs-mental-health-services/
or go to **www.nhs.uk/mental-health**

With the COVID restrictions beginning to ease, we are looking to the future and are planning activities and fundraising events. We welcome new members and supporters to our small and friendly branch and you do not need to have served in the Armed Forces to join. If you would like more information on joining us or want to support the RBL, please contact any of the following Branch Officers or **Committee members:**

President - Colin Davis: **831075**
Chairman / Standard Bearer - Richard Stevens: **838805**
Treasurer - David Lindsay: **830640**

Committee:

Tim Covens, Peter Bradshaw, Ian Elliott

NEW ADVERTISERS!

Would you like to tell local people about your local business?

EDIS is delivered to over 1,000 homes in Evercreech and surrounding areas twice each year.

Contact the EDIS Team by 13 September (see cover page) to find out more about advertising in these pages.

Heathercreech Kitchen

Tel: 01749 831000

Freshly Made Sandwiches

Hot Pies & Pasties

Homemade Cakes

Sweets

Tea & Coffee

Mon - Sat

7.30am to 4.30pm

Victoria Square, Evercreech

**SELF
PUBLISHING
&
BOOK
PRINTING**

Writing a book?
From design and advice to
print and dispatch, we are
here to guide you.

**ST ANDREWS
PRESS**

EVERCREECH WALKING GROUP

Phone: 01935 823347/07790 853257

Email: julie@gethappyfeet.co.uk

Spring 2021

Once again with the present government guidelines so far this year we have not been able to walk together as a group. However with the four-step roadmap we will hopefully be able to walk together again by June.

7 June - walk to Chesterblade, Higher Alham, back via Westcombe.

5 July - circular walk to Ditchat.

2 August - walk to Spargrove and Batcombe Vale.

6 September - walk to Pecking Mill, Easton Hill to Pylle and back to Evercreech.

4 October - walk to Chesterblade, Prestleigh and Bagborough.

All walks start from Evercreech Village Hall at 10 am. Walks usually last around 3 hours depending on route or if we find a coffee stop. Walks are mostly on footpaths across fields which can still be wet and muddy even in the Summer months, so please wear suitable footwear. It will be so good to get back to walking in a group again, I have certainly missed the company.

Everyone is welcome. We are a friendly bunch so please join us.

Stay safe everyone. Any questions please contact me as above.

Julie Smith

EVERCREECH DRAMA GROUP



We are pleased to advise that the Drama Group committee has resumed committee meetings via zoom in 2021. We are excited to be able to communicate to you all that we are looking to plan an event (subject to any Covid-19 restrictions and changes) for

December 2021. This will not be a staged performance in the Village Hall but something equally exciting and an event that we hope will bring the whole community of Evercreech and surrounding communities together. As part of the event in December we will be looking to run a competition during 2021 which will take centre stage for the event; please do keep a look out for further information.

Evercreech Drama Group has been entertaining audiences since 1991, when Mollie Purse MBE was inspired to form the group initially to help boost much needed funds for the upkeep of the Village Hall. To this day we are a band of like-minded people who enjoy amateur dramatics, being on stage and performing, behind the scenes, making costumes, set design, or simply being part of a friendly group of people.

We thank you for your support and look forwarding to connecting with you all again later in the year.

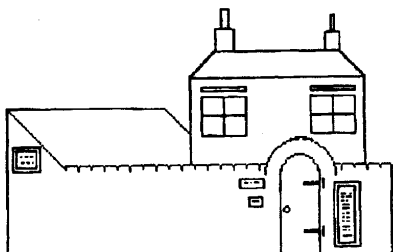
If you are interested in participating in the Drama Group or would like to be updated with our activities, please send us your details: email evercreechdrg@gmail.com or phone Greg Jessop on **01749 831122**.

The Drama Group's **costumes are for hire** for any occasion. There is a charge of £10 and a refundable deposit of £10 per costume. Telephone Greg Jessop or email as above for further information and to arrange hire. For further details and activities join us on Facebook, or email with your details so we can keep in regular contact with you.

Great Ostry Picture Framing

The Workshop

10, Great Ostry
Shepton Mallet



Specialist in
Needlework Framing
Tel: 01749 344298

Heal and Sole Holistics

Station Road, Castle Cary, Somerset BA7 7BX

Telephone: 01963 350639

healandsole@yahoo.co.uk

Promoting a healthy lifestyle naturally



www.healandsole.co.uk

Specialising in

Reflexology

Reiki, EFT and

Indian Head Massage

EVERCREECH F • I • L • M • S

www.facebook.com/evercreechfilms

Evercreech Films is a not-for-profit organisation that, in "normal" times, brings cinema to the Village Hall on the third Saturday of each month, barring busy holiday periods. From comedies and gangster movies to blockbusters - there's something for everyone.

In the past we have shown children's films to coincide with Easter, Halloween & Christmas where the children have sat on our soft floor mats and enjoyed sweets and other refreshments while watching a movie.

For adults we have cabaret-style seating with refreshments available to buy at the bar/cafe, all of which make for a comfortable and enjoyable evening out.

And this year has seen a superb upgrade to the Hall's sound system to add to the overall cinema experience right here on your doorstep.

Tickets are usually £5.00 for adults and £3.50 for children aged 12 and under, with family concessions available.

Like most other organisations and enterprises we had to put a hold on our activities last year and the beginning of this. However, if all goes well, we do hope to be able to start up our regular screenings in the Village Hall again this autumn.

In the meantime and in conjunction with the Village Hall we will be showing a film on the evening of Saturday, 3 July as part of the Hall's re-opening celebrations. Entry will be free, but **by reservation only** as numbers will be limited so if you would like to join us please contact us by email or text - details below.

For further information, or with any film suggestions, please either email us at evercreechfilms@gmail.com or call us on **07765 892004**.

MOVIOLA – Rural Cinema

www.moviola.org

Registered Charity: 1107649

Moviola brings the latest and best in cinema to a rural community. Due to the changing situation in the UK around the Coronavirus, please directly contact the venue holding the film you wish to attend to ensure the show is going ahead. Please visit the website for further information.

Castle Cary – Tessa Gayford **01963 350132**

Ditchat - Geoff Webber **01749 860184**

Doulting - Matt Bowley on **07540 721970**

Nunney - Contact Roger Hutchings **01373 836049**



We are still hoping to return in due course and the Committee will decide later this year whether and how we'll be able to return before the end of 2021. If you receive emails from us, we will be in touch but if you would like to go on our database or check the latest information, please email me at chunt@mbzonline.net thank you.

Elizabeth Hunt

WILF'S WOOD



If you don't already know about Wilf's Wood, it's a tree planting / rewilding project on 14 acres of land on Leighton Lane in Evercreech, near the industrial estate. Since October we have been

planting trees and encouraging local people to be involved. The aim of the project is to eventually create a natural community space for use and enjoyment by everyone in the village.

Alongside this we want to provide a biodiverse environment including wetlands and woodlands for carbon capture. At the beginning of March, we planted 300 trees that were donated by the Explorer Scouts from the Woodland Trust. We had already planted 200 trees in the winter (many donated by villagers).

Covid restrictions have affected the number of people we could involve recently, but with the growing season starting and the release from Covid restrictions approaching we will definitely be needing some maintenance help soon.

We will especially need to keep on top of weeds round the bases of all our new saplings.

If anyone has a digger and can work with us to create ponds, we'd be very grateful if you could contact us!

If you are interested in helping - please email:
wilfswood@gmail.com

We will keep everyone posted on our website:

wilfswood.wordpress.com/

and via Facebook: www.facebook.com/wilfswood

Linda Medhurst Seamstress

Curtains, cushions, blinds,
home furnishings
minor alterations/repairs

Reasonable rates

Tel: 01749 831264

Mob: 07951 638273

lamedhurst@btinternet.com

THE CINNAMON TRUST

www.cinnamon.org.uk
 admin@cinnamon.org.uk
 Tel: 01736 757900



Registered Charity Number 1134680

The Cinnamon Trust is a charity that cares for the pets of the elderly and terminally ill when staying at home is no longer an option. Their Pet Friendly Care Home Register lists care homes and retirement housing happy to accept residents with pets and,

providing previous arrangements have been made, they will take on life time care of a bereaved pet.

Volunteers foster the pets, either temporarily or permanently as necessary. The Trust charges nothing for their pet care and depend totally on donations.

Address: The Cinnamon Trust
 10 Market Square, Hayle,
 Cornwall TR27 4HE

PET WATCH **(Established 1992)**

- * Mature, reliable local **PET SITTER** available to care for your pets in their own home
- * Lots of T.L.C. and cuddles
- * Feeding and exercise
- * Weekends/Weekly
- * Live in or visit daily
- * References available



For more information please contact:

Janet Murray

01749 830480 or 07968 683058

Jpmurrayu3a@gmail.com

GLASTONBURY AND WELLS dogs PROTECTION

www.cats.org.uk/glastonbury
 lostandfound@glastonbury.cats.org.uk



Cats Protection is a National Cat Rescue and Welfare Charity, taking in **lost** and **unwanted cats**, finding **new homes** for them, and providing advice on general **cat welfare** problems.

The Glastonbury & Wells Branch of **Cats Protection** covers a largely rural part of **Somerset** including **Shepton Mallet, Wells, Glastonbury, Street, Cheddar, Castle Cary** and surrounding area. There are always friendly cats needing new homes. As there is no central cattery, all cats are kept at the homes of volunteer fosterers.

Contact Number - **01749 850660**

Lost/found cats – **07833 634087**

The Pecking Mill Inn & Hotel

A371 Evercreech, Shepton Mallet BA4 6PG



En Suite Bed and Breakfast
 Accommodation

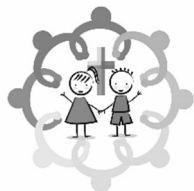
Family Room Accommodation

**Food is cooked fresh to order and
 comes from local suppliers**
 A La Carte Restaurant

Parties of up to 30 can be catered for
 Internet Access

Telephone: 01749 830336

Fax: 01749 831316



THE FOSSE FEDERATION OF SCHOOLS

Acorns Pre-School, Evercreech Church of England Primary School
and Lovington Church of England Primary School

We believe that the learning experience and achievement of children at our schools will be improved through closer collaboration.

By working together we will ...

- Operate much more efficiently through the sharing of resources and expertise as school budgets are becoming increasingly tight.
- Meet the individual needs of the children in our community whilst building on the strengths of each school to benefit all of the pupils.
- Raise the standards of teaching and learning across both schools by enabling staff to work collaboratively.
- Provide opportunities for children to work together.
- Develop leadership structures suitable to face the challenge of the modern education system.
- Provide greater opportunities for joint staff training and sharing of good practice.
- Aid in the recruitment and retention of high-quality staff.

Our aim is to continue to drive up standards of teaching and learning across both schools whilst retaining their individual importance within the heart of their own communities.

Norma Anselm



EVERCREECH CHURCH OF ENGLAND PRIMARY SCHOOL

Paradise Crescent, Evercreech, BA4 6EH
office@evercreech.somerset.sch.uk
01749 830447



Paradise Crescent, Evercreech, Somerset BA4 6EH
acorns.preschool@btinternet.com
01749 831338

Big enough to provide, small enough to care!

- Dedicated staff who are committed and work together to provide an exciting, stimulating and flexible curriculum.
- Purpose-built modern buildings set in idyllic grounds, both of which help to create a first class learning and social environment.
- Meaningful school vision supported by constant focus on learning skills, which helps to provide whole school direction.
- Progress of all pupils is recognised as 'good' by OFSTED; the children are proud of their school.
- Fabulous hot lunches provided in partnership with The Bell Inn.
- Breakfast and After-School Clubs always available.
- Up to date user-friendly website giving regular communication including a weekly newsletter.
- Significant sporting achievement in a range of team and individual activities.
- The school at the heart of the local community, helping to facilitate feelings of purpose and belonging.

Acorns is open five days a week (term time only).

Our opening hours are:

Monday - Friday 9.00 am – 3.00 pm

We take children from 2 years old until they start school. We offer a wide and varied curriculum following the Early Years Foundation Stage and are members of the Pre-School Learning Alliance.

Acorns offer a large outside area with lots of space for play, including sandpit and slide. Our covered area allows the children to spend time outdoors whatever the weather!

We pride ourselves on a warm, friendly and welcoming atmosphere for both children and adults. We are also very excited by our new build which has extended internal provision.

OFSTED Rated 'GOOD'

We are looking forward to the opportunities and challenges which lie ahead with confidence, and in the justifiable belief that Evercreech Church of England Primary School is providing a good quality education for all of its pupils.

It is our intention to maintain this growth through working together. Greater links with the local community and St Peter's Church have demonstrated our belief in, and commitment to, the cohesion of our community.

The School Newsletter is published weekly
on: www.evercreech.somerset.sch.uk

Yard Sale

Saturday 1 May – there will be stalls around the village from 10 am - 2 pm.

**ASSOCIATION OF PARENTS
AND TEACHERS (APT)**
**EVERCREECH CHURCH OF
ENGLAND PRIMARY SCHOOL**



We are a friendly bunch of parents, staff members and friends of the school and preschool who organise social events to help raise crucial funds for projects which are not included in the School's budget.

This year, due to the effects of COVID-19, we are having to think outside the box for fundraising ideas. Our usual events, such as school discos, fayres, film nights and bingo will have to be put on hold. We would welcome any fundraising ideas, such as running a 5km/10km/marathon for the School, holding an outdoor cake sale, anything you can think of! In 2021, some of the APT hope to complete a sponsored 21km walk.

In 2019/2020, we helped to fund items associated with the OPAL Programme, which supports schools in developing a cultural shift in thinking about and supporting children's play - embedding play into school's policies and practices.

This year we hope to raise money for a 7th classroom at the school so that the children are able to remain in their class 'bubbles'. At the time of writing, details are not confirmed, but please look out for more information from us.

Any help and input you can give is always very much appreciated in benefitting the school and our children.

Come and like our Facebook page to show your support:

facebook.com/EvercreechPrimarySchoolAPT

Email: **evercreechapt@gmail.com**

Current APT committee members are:

Chairs: Gemma Duck & Jenn Talbot

Secretary: Jenny Haines

Treasurer: Sine Angell

Supported by a wonderful team of volunteers.

EDIS VOLUNTEERS

The EDIS Team would like to recruit more volunteers. If you can spare some time twice a year to work with us and have basic IT skills, please contact us on **01749 831069** to find out more.

Jeff Whitcombe
**Under 1 Roof
General Maintenance**

General Maintenance

Bathroom Installation

Kitchen Installation

Tiling and Plumbing

**19 Bowns Close,
Evercreech BA4 6JQ**
email: whitcombetowers
@hotmail.com
• **Tel: 01749 830972**
Mobile: 07835 596323

Vale of Camelot Growers

Old 303, Sparkford BA22 7JR

**Now open for
PLANTS GALORE**

Annuals: basket, bedding, tomato
and vegetable plants

Perennials: Delphiniums, Lupin,
Geum, Geranium, Gaura, Lavender,
Salvia ... to name but a few.

Hanging Basket orders now being
taken or choose a ready made one
from our beautiful selection.

**Closed Mondays
and Tuesdays**

**Open Bank Holidays and
Wednesday – Saturday**

9.30 am to 5.30 pm

Sunday 10.00 am – 4.00 pm

Call: 07969 37297

ARTHUR ALLEN EDUCATION TRUST

Are you

- **16 TO 25 YRS OLD?**
- **A 6th FORM, COLLEGE OR UNIVERSITY STUDENT OR SIMILAR?**

Do you

- **LIVE IN THE PARISH OF EVERCREECH?**

or were you

- **BORN IN THE PARISH?**

If so you can **APPLY FOR A GRANT** from **THE ARTHUR ALLEN EDUCATION TRUST** for help with e.g. travel costs, books, equipment etc.

Download an application form at:

www.evercreech-pc.gov.uk or
collect from EVERCREECH PHARMACY or

contact Tom Stearn, Trust Secretary,

Tel: 01749 830087

tom_stearn@btinternet.com

CLOSING DATE 30th SEPTEMBER EACH YEAR

CASTLE CARY UNIVERSITY OF THE THIRD AGE U3A (Camelot Group)

u3asites.org.uk/camelot-area/home

**Please visit the website for announcement relating to
Covid-19 restrictions**

U3A stands for the University of the Third Age. This self-help organisation is for people no longer in full time employment and is run by volunteers. Each group uses the skills of its own members to organise and provide interest groups.

The wide range of groups meet in various places. The monthly meeting is on the last Friday of each month, at 2.30 pm, at Caryford Hall, Ansford, Castle Cary.

Subscriptions are £15 per year.

Contact: **01963 351269** or use the contact form on the website.

READERS!

If you contact a local business or service after seeing it in EDIS, please let them know. It helps them to know their advert has been effective and in turn helps us to keep producing this publication free to local people.

ANSFORD ACADEMY

Maggs Lane, Castle Cary,
Somerset BA7 7JJ

Tel: 01963 350895

Fax: 01963 351357

www.ansford.org.uk

mailbox@ansford.org.uk



See the website for updates regarding arrangements in response to Covid-19, including virtual open days.

Most children from Evercreech and the surrounding area transfer to Ansford Academy, Castle Cary for secondary education.

At Ansford Academy, education is about everyone achieving his or her best, while developing individual character and personality. Our motto, *learning together to lead our lives*, reflects our passionate belief in equipping individuals with the skills to make a success of their lives - to secure useful and rewarding work, make and sustain good relationships and contribute positively to local and global communities.

In our fast-moving and challenging world, a strong portfolio of qualifications opens doors and increases opportunities but does not guarantee success. Our focus at Ansford Academy - for students, teachers, associate staff and families - is on learning how to be the best we can be. We seek to achieve this through a constant desire for growth in three key areas:

- Unlocking potential and securing futures
- Laying the foundations for lifelong learning
- Forming and maintaining quality relationships

We take seriously the responsibilities of working together as a community, striving for excellence in all we do and ensuring that all of us are valued for who we are and who we can become. Through high academic and personal expectations, we inspire our students to enjoy their time here and ensure that they leave fully prepared for the next phase of their lives.

SECONDARY EDUCATION is also provided at **Whitstone School, Shepton Mallet** for 11 to 16 years, **The Blue School, Wells** for 11 to 18 years, and 6th Form at **Sexey's School, Bruton** (at which some assisted boarding places are available for 11 to 18 year olds).

Strode College in Street and **Yeovil College** are also available for 'A' level and other further studies.

SHEPTON MALLET UNIVERSITY OF THE THIRD AGE (U3A)

www.sheptonmalletu3a.org.uk

(Currently unavailable)



Shepton Mallet U3A is part of a nationwide movement of local groups open to those of retirement age and no longer in full time employment. Since March 2020 activities have been affected by COVID restrictions but we are hoping to restart our website for updates and information.

EVERCREECH & DISTRICT LOCAL HISTORY SOCIETY

The History Society does not hold meetings during the Summer months. However, we are very much looking forward to welcoming you all back in September, when we will commence our Winter programme.

The first three meetings all have a local theme:

Tuesday, 21 September

Healthcare in Evercreech from 1759

Our Chairman, Gill Lindsay will speak on this subject which includes past epidemics. The talk was cancelled in March 2020 at the beginning of the present epidemic so is a "hot" topic.

Tuesday, 19 October

The Railway at Evercreech

Andrew Tucker, a local railway enthusiast, will give an insight into the early history and subsequent developments up to its closure in 1966.

Tuesday, 16 November

Evercreech Archives

The History Society has a considerable number of documents relating to the village. This meeting will give the opportunity of viewing many of these fascinating records and hearing about the new catalogue which puts Evercreech on the National Archives website.

We do not meet in December but are currently putting together our programme for the New Year. Details will be in the November issue of EDIS.

Meetings are held in the main room of the Village Hall commencing at 7.30 pm. on the third Tuesday of every month. Everyone is welcome. There is a small charge of £3.

Val Bath, Secretary

Stop Press!

I am pleased to tell you that we now have a website in which you can see the future programme, browse a gallery of photographs and see what books we have for sale. Please have a look at:
www.evercreechhistorysociety.org.uk/

Gill Lindsay

SOMERSET CHURCHES TRUST

www.somersetchurchestrust.org

This is a charitable, environmental and non-denominational Trust, raising money for the repair and improvement of churches and chapels open for Christian worship in Somerset. The Trust, founded in 1996 under the name Friends of Somerset Churches and Chapels, exists to encourage interest and the involvement of all members of the community in the magnificent heritage of our fine religious buildings.

All are welcome to events, which include church tours and talks. For news and events please visit the above website.

R M Stonework

Stone Walls

Repairs

Re-pointing
and

Lime Work

Telephone **Rob:**

07837 941301

rob2582@outlook.com

www.rmstonework.co.uk

Trotman

Funeral Directors

ASHDENE, CRANMORE,
SHEPTON MALLET BA4 4QQ

01749 880271

Independent family business
established 1933

Private Chapel of Rest

Golden Charter
Funeral Plans



www.trotmanfuneral.co.uk
Owned by Forsey & Son

THE ARTS SOCIETY - MENDIP**W - theartssocietymendip.org.uk****E - tasmendip.comm@gmail.com****Membership Secretary - 01934 862435**

You may remember from the last issue that The Arts Society is a group which has an interest in and enjoys the arts in its broadest definition. Our Society is affiliated to the national organisation now known simply as The Arts Society. Our objective, through lectures and visits, is to add to our knowledge and enjoyment of the visual arts. When conditions permitted, we also had a project each year to help a school or institution, with the aim of introducing either a new form of art or a new experience of art appreciation.

Much has changed since I last described the Society in this publication. First, we had to move our venue and were fortunate to be welcomed by Robin Peters and his team to Strode Theatre, Street. Then, shortly after we had settled into the new venue, the pandemic struck. As we all know large gatherings in theatres are no longer permitted (or desirable!). However, to keep our interest in the arts alive and to maintain some sort of association among our members, we now enjoy our lectures from the comfort of our homes through the Zoom Application. It has been remarkably successful (for those who have a computer). Our lecturers share our wish to keep the interest in their lectures alive and so now we can offer a full year's programme, either online or, if conditions should change, live back at Strode Theatre. As before, the lectures are given on the first Tuesday of the month at 11.00am between September and June. Our lecturers are experts, chosen not only for their knowledge, but also for their presentational skills and entertainment value. They speak on a huge variety of topics: architecture, artists and designers, china, glass, painting, music, furniture, sculpture, jewellery and much more, covering prehistory to modern times.

The full programme can be found on our website. If you wish to join us for a lecture (or more!) contact us as above.

It seems at the moment superfluous to talk about the visits that normally are arranged each year as all that is on hold for an indefinite period. No decision has yet been taken about returning to our 'normal' venue at Strode for our monthly lectures but we shall consult our members to see when this will be appropriate.

Why not take the time to have a tour of our website and perhaps we'll see you at one of our Zoom meetings or at some time even further in the future, at a real, live meeting?

NEW ADVERTISERS!

Would you like to tell local people about your local business?

EDIS is delivered to over 1,000 homes in Evercreech and surrounding areas twice each year.

Contact the EDIS Team by 13 September (see cover page) to find out more about advertising in these pages.

THE ARTS SOCIETY – MID-SOMERSET**mid-somerset.theartssociety-wessex.org****enquiries.mid-somerset@theartssociety-wessex.org**

The Arts Society Mid-Somerset, founded in 1991, is a member society of The Arts Society (originally the National Association of Decorative and Fine Art Societies - NADFAS).

Lectures are held in Caryford Hall, Ansford, Castle Cary normally on the third Tuesday of the month, except for August and September when there are no lectures. There is extensive free parking at this attractive modern hall which has a 'hearing loop'.

The Tuesday morning lectures, given by professional speakers, are our core activity for the year. There are also visits throughout the year to exhibitions, museums, art galleries, country houses and gardens. The Society is a very friendly group of people who enjoy sharing the same interests.

Please see website above for timetable changes due to Covid 19 Coronavirus.

READERS!

If you contact a local business or service after seeing it in EDIS, please let them know. It helps them to know their advert has been effective and in turn helps us to keep producing this publication free to local people.

A. Brockway & Son

All aspects of carpentry
from bespoke to mdf

All door, window locks
repaired or replaced

City & Guilds Qualified

Tel: 07870 624108

Email: xohuck@talktalk.net

Carymoor Environmental Trust is an independent environmental education charity based just outside Castle Cary. Established in 1996 the charity encourages people to adopt more sustainable lifestyles. The charity operates from an inspiring visitor centre which demonstrates a number of sustainable technologies including solar panels, solar hot water, composting toilets and rainwater harvesting.

Carymoor is partly sponsored by Viridor, the waste and recycling company, on whose site the charity operates. In addition to this sponsorship other funding and donations are essential to keeping the project running. The Trust manages 100 acres of a capped landfill site which the Charity has been working to restore into a nature reserve since 1996. Carymoor has worked with a number of universities, colleges and conservation partners to develop a rich patchwork of habitats on the site. The site was designated a Local Wildlife Site in 2014 and won the Biodiversity Benchmark award in 2016.

Over 100 schools from all over Somerset, as well as from the wider region, visit the site each year to take part in a range of activities. The education team inspires visiting schools to reduce waste, save energy and to take these messages back into school. Carymoor also uses the different habitats it has created to give children a first-hand experience of the natural world. In addition to providing education at the site, the team also goes out to schools and delivers curriculum linked workshops in the classroom. To find out more about Carymoor's education please visit:

www.carymoor.org.uk/trips

The charity very much depends on the volunteers for all aspects of its work. Volunteers carry out much of the practical conservation work on the site as well as assisting with education delivery, wildlife monitoring, marketing and fundraising. Carymoor regularly runs family fun activity days during the school holidays and other events and courses.

For further information please phone: **01963 350143** or e-mail: info@carymoor.org.uk. If you'd like to get involved, we'd be delighted to hear from you.

SP COURIER / DELIVERY SERVICES

STEVE POORE

Owner Van Driver

Short or Long Distance

Competitive Rates

Also available to drive your vehicles from vans to HGV

07886241340

poores@talktalk.net

CARYFORD FITNESS & LEISURE



Active body. Active mind.

Caryford Fitness & Leisure Centre, Maggs Lane, Castle Cary, Somerset, BA7 7JJ

www.1610.org.uk/centres/caryford/

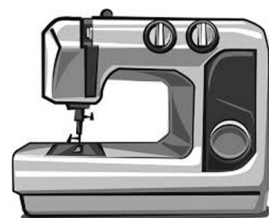
Located just behind Ansford School 1610 Caryford offer a welcoming and friendly environment for all ages. There are different types of memberships starting from £27.99: Get Set Gym, Get Set Gym Plus, Fit And Active and there is a Pay as You Go option.

It is hoped that the timetable for classes will be back up and running on the 17 May, in line with government guidelines.

We also offer use of the sports hall and outside hard courts for Badminton, Football, Netball, Tennis and multiple other sports. For more information visit the above website or our Facebook page: facebook.com/1610Caryford/ or phone: **01963 350600**.

SEWING MACHINE SERVICE CENTRE

Repairs & Servicing to all makes
- Domestic & Industrial



Collection & Delivery Available
Embroidery Engineering Services

Suppliers of *Barudan*
Computerised Embroidery Machines

Telephone: **01963 350068**

Mobile: **07947 725315**

Email: robert_churches@hotmail.com

**UNIT 8, TORBAY INDUSTRIAL ESTATE,
CASTLE CARY BA7 7DT**

EVERCREECH EXPLORERS

For 13 ½ - 18 year olds

www.facebook.com/evercreechexplorerscouts

COVID safe face to face meetings resume on the 1st April.

If you are interested in joining us please email:

gunnerexplore@gmail.com or sign up at:

tinyurl.com/vj3roqs

You could trek across the highlands, build a go kart, sleep in a hammock, take part in international and national camps, DofE and the Young Leaders scheme; all whilst having a great laugh with your mates and making a difference to your community. The limit is only your imagination.

Time: Thursdays 7.30 – 9.30 pm during term time

Evercreech Explorers are currently on the lookout for leaders aged 18+ who are interested in helping support and develop our young people. No amount of time is too small, and we have flexible volunteering to suit you! Help make a difference to the lives of young people by giving them skills for life. Please contact Natalie if you are interested.

Interested in Guides, Brownies, Scout or Cub groups?

Please contact the group lead for an update on arrangements responding to Covid-19 restrictions.

SCOUTS

Up to age 14 years

The nearest Scout groups for Evercreech are Bruton and Shepton Mallet.

CUBS

From age 8 years

Group in Shepton Mallet.

BEAVERS

From age 6 years

Groups in Bruton and Shepton Mallet. The Shepton Group is welcoming new members.

For more information on Bruton Groups, contact Tim Wilson on 07889 285358.

More information about Scouting in East Somerset can be found at **www.eastsomersetscouts.org.uk**.

SHEPTON MALLET RANGERS

For girls after Guides, older than 14 years.

Contact – please leave a message:

Emma Legg **01749 880443**

RAINBOWS

For girls aged 5 - 7 years

Contact: Sue Barnstable **01749 344121**

or Emma Dukes **01749 345616**

1st EVERCREECH GUIDES

Weekly Zoom meetings

Contact: Nicola Barnham **07811 145781**

1st SHEPTON MALLET GUIDES

For girls aged 10 - 14 years

Contact – please leave a message:

Emma Legg **01749 880443**

1st SHEPTON MALLET BROWNIES

For girls 7 – 10 years

PRE-SCHOOL

LITTLE FISHES

This is a small friendly group that normally meets in St Peters Church on Monday mornings, 10.00 am – 12 noon. Parents and grandparents chat over a cuppa whilst pre-school children play.

EVERCREATURES

BABY & TODDLER GROUP



- Open every Wednesday during term time, 10am – 12noon
- All children under 5 welcome
- Cost £2.50 per family

In response to Covid-19 restrictions we are currently closed. We will reopen in the foreseeable future as soon as it is safe to do so.

Our friendly, relaxed group meets every Wednesday during term time in Evercreech Village Hall. All children from birth to pre-school age and their accompanying adults are very welcome!

We have a wide range of toys, slides, trampolines, books, puzzles, dressing-up clothes and more, and aim to offer a range of craft activities, free play, story time and singing every week.

Healthy snacks and drinks are provided for little ones and coffee and biscuits for the adults!

Everyone is warmly welcome, from all areas.

If you would like more information, contact:

Vikki **07853 853221** or Kara **07900 986587**

EVERCREECH YOUTH CLUB

Due to COVID, Youth Club is currently closed but will re-open as soon as possible.

This is a lively and active organisation for the young people of the village. Evercreech Youth Club is situated in the Chilla Hut, Playing Fields, Queens Road. Held every Thursday:

- 8 - 11 years meet from 6.30 pm until 8 pm
- 12 - 16 years meet from 8 pm until 9.30 pm

Cost per session: £2.00 per person

Sessions, supported by a Youth Worker, include various activities including Games, Pool, Table Tennis, Arts and Crafts and Cooking. In the summer months there is a greater emphasis on outdoor sports on the Playing Field. In addition to this, occasional trips are organised to the cinema, swimming etc. with parties for special celebrations. The young people are encouraged to contribute and to influence the programme planning.

We aim to promote healthy eating and the young people are encouraged to try new foods as well as food preparation and cooking. There is a tuck shop available for those who wish to use it. Fundraising is an important part of the committee's role and we are reliant on grants, donations and fundraising events.

Please let us know if you are interested in joining the club, in becoming a much-needed volunteer or supporting us in any other way, please contact: Vikki on 07853 853221

Come and Join the Fun!!

SOMERSET BEEKEEPERS' ASSOCIATION

News from the world of beekeeping

The Chairman of Somerset Beekeepers' Association, Stewart Gould, is urging beekeepers to keep local honey bees and reject a campaign to overturn the recent ban on bee imports.

Beekeeping Associations from around the UK are warning that new import arrangements are causing an imminent and serious risk, that the exotic bee pest - the Small Hive Beetle could be introduced into the British Isles. A petition relating to this can be found at:

petition.parliament.uk/petitions/577603/signatures/new

History

The National Botanic Garden of Wales has tracked how the UK's fields, hedgerows, wild spaces and gardens have changed since the 1950s and there are clear differences. Agricultural intensification after the Second World War led to profound change within the UK landscape with a decline in species-rich grasslands and permanent pastures and the destruction of hedgerows and woodland. White clover was the most important plant for honey bees in the 1950s but has now dropped to second place. Insects are now visiting much more bramble, oilseed rape and the highly invasive Himalayan balsam. Other important crops today include hawthorn, apple, cotoneaster, sycamore, maples, cherries and plums and ling heather.

Botany

Why do some flowers have two sets of anthers? Most flowering plants depend on pollinators such as bees to transfer pollen from the male anthers of one flower to the female stigmata of another flower. Bee pollination, however, involves an inherent conflict of interest because bees are only interested in pollen as a food source. A new study from the University of California Santa Cruz explains: "If a flower doses a bee with a ton of pollen, the bee is in pollen heaven and it will start grooming and then go off to feed its offspring without visiting another flower. So some plants have different mechanisms for doling out pollen gradually. In the case of the wildflower *Clarkia*, the flower is hiding some anthers and gradually revealing them to pollinators, and that limits how much pollen a bee can remove at each visit."

Swarms

Honey bees will naturally swarm to reproduce colonies. The old queen leaves the hive with some of the bees and they will hang in a cluster until the scout bees decide on their new home. The main swarm period is between April - July and local swarm collectors are available to remove them. Please go to bbka.org.uk and look for the Swarm Collector Map under **Swarm Removal**.

EVERCREECH BONFIRE AND FIREWORKS

It is hoped that this year we can present our Bonfire and Fireworks on **Saturday 6 November**. This of course will be in line with any Covid restrictions which may apply at the time.

Comments are invited from the community relating to this event. Please phone either Dave on **01749 830902** or Brian on **01749 830331**.

PROJECT LINUS UK

Providing security and comfort to sick and traumatised babies, children and young adults through quilts.

"A quilt is a hug you can keep"

Project Linus originated in America providing blankets to a children's cancer centre in Denver and has since spread across the world. It was named after the little boy in Charles Schultz's "Peanuts" cartoon strip who was always featured carrying his security blanket and started in the UK in March 2000. Project Linus UK is divided into county areas each with its own co-ordinator, who examines each finished quilt and distributes to hospitals, child and neo-natal units, hospices, and many other centres.

Linda McGregor is the Bath and Wells co-ordinator - email: linda.somerset@gmail.com

A local group of Linus quilters meets in Evercreech village once a month. We meet on the second Tuesday of each month, from 10 am to 12 noon, at The Old Stores, opposite St Peter's Church. We are grateful to Nik, the owner of the Stores for allowing us to meet there at a very low rent.

We welcome new and experienced quilters to this group, machine quilters, hand quilters, makers of crochet and knitted blankets. We have been donated fabric, so it need not be an expensive hobby. If you are free pop in to meet us and enjoy a coffee and biscuit with this very friendly group.

"In February, Linda took 50 quilts made by our group including ones made for distribution to children by Dr Barnados. We continue to raise money by craft sales at The Old Stores."

This post should contain a health warning, quilting is addictive and your home will never be free of cotton threads.

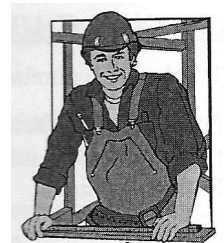
Local Contact: Telephone: **01749 838809**

Email: jaci.elliott@btinternet.com

Local Carpenter

For all your carpentry requirements

**Doors, Windows,
Kitchens, Gates,
Fencing, Flooring,
Lock fitting Service**



Workmanship Guaranteed

01749 830796

EVERCREECH SPORTS CLUB

Weston Town, Evercreech, BA4 6PE

Registered Charity no. 1112470

Reg. Office: Oakhill BA3 5HU

Company No: 5608846



Chair: Dave Briars 01749 830902
 Hon Sec: Jon Cox 01749 830949
 Treasurer: Paul Sealey 07719937359
 Bookings Sec: Shaun Herlock 01749 830712

HAVE YOU visited the area lately? It's a community area and **all are welcome**. The area is already being used by sports clubs, charity functions and other organisations.

Clubs

Football, Rounders, Rugby - Come down and join or watch!

Covid-19

Yes, we have a problem like everyone else but teams are still playing under their own Covid restrictions. Keeping sport going is vital but always with Health & Safety in mind.

Finances are always tight

If anyone has any ideas how to improve our financial status, please contact us, join the group or even offer to sponsor.

We are always looking for new members with bright ideas to help run the club.

New people will bring fresh ideas and take the club forward - in particular people who *have recently joined the village are welcome* - come on...help us to create an area for the whole village.

If there is any other activity/function organiser that would like to check the facilities, please contact the persons below.

The fields and pavilion are available for hire. Ideal for all occasions!

Remember, bookings through Shaun Herlock.

Dave Briars, Chair May 2021

EVERCREECH ROVERS FOOTBALL CLUB

Chairman – Gary Escott 07971 031498

First Team Manager
 Ben Rivers 07730 878711

Secretary – Leah Cox 07896 270879

Reserve Team Manager
 Trevor Vaughan 07890 817452

Evercreech Rovers run an adult football team in the Mid Somerset Football League playing on Saturday afternoons. We train on Thursday evenings at Evercreech Sports Field, Weston Town. All newcomers welcome, just contact one of the above.

DITCHEAT BADMINTON CLUB**CALLING ALL
BADMINTON
PLAYERS**

Due to the current situation, we are unable to meet, but usually we play in the Jubilee Hall, Ditchat,
 Monday 7.30 pm - 8.30 pm
 Wednesday afternoons from 2.00 pm - 3.00 pm. Good friendly club. All ages and abilities are welcome including “rusty racquets”.

Interested? Call Gaye Volk **01749 860081**.**EVERCREECH ROUNDERS CLUB**

Evercreech are proud to have had a well-established rounders team for over 30 years and have entered every year in the Somervale Ladies League.

We hope to be able to commence practice for 2021 in April at our home pitch Weston Town Sports Ground. Matches will start on the first Wednesday and most Wednesdays thereafter until early August 2021.

Home and away matches start at 7pm. We welcome all players of any age or ability, although a minimum age of 14 is required for insurance purposes.

For more information please contact:-

Captain Hayley Kessell **07702 599200**Vice-Captain Tracy Watts **07969 871795****NEW ADVERTISERS!**

Would you like to tell local people about your local business?

EDIS is delivered to over 1,000 homes in Evercreech and surrounding areas twice each year.

Contact the EDIS Team (see cover page) to find out more about advertising in these pages.

EVERCREECH SHORT MAT BOWLING CLUB

Due to the current situation, we are not able to meet, but usually we meet in the Village Hall on Wednesday evenings at 7 pm, and Thursday afternoons 1.30 pm – 4.30 pm. You will be made very welcome; on the whole we are a friendly bunch. Bring the family, bowls is not just for the aged and infirm - although some of us are getting that way!! Club bowls are available - you do not have to have your own.

Membership is £12 per year plus Adults £3 & Juniors £1 per session to play. You don't have to sit in front of the box. Join our club and have some fun and exercise.

Contact: Andy Church **831004**
 Irene Cleverden **346838**

MENDIP BRIDLEWAYS & BYWAYS ASSOCIATION (MBBA)

www.mbba.org.uk



The aims of the Association are to protect and preserve the character and status of Mendip's Green Ways for the safe use and enjoyment of all users, particularly children.

We are particularly interested in safety on our busy roads and would encourage all horse riders to wear Hi-viz clothing and be considerate and polite to other road users. Drivers may not realise that it is not always possible, for safety reasons, for riders to take their hands off the reins to acknowledge considerate drivers. Horses are flight animals and therefore may spook at any time. **We do appreciate those drivers who slow down when passing us.**

Membership is £15 per annum per person. Members have reduced entry fees to our rides and meetings and discounts at some tack shops. There is a newsletter twice a year.

Contact Ginnie Jones on **01749 831276** or email gjones@mbba.org.uk

For more information please contact Ginnie or visit the above website of Facebook.

RIDING FOR THE DISABLED ASSOCIATION



**Registered Charity 1123238
Somerset Levels RDA Carriage
Driving Group**
www.sbanksomersetlevelsda.org

This is a local charity, based in Binegar just off the A37. The group is part of the larger charitable organisation, Riding for the Disabled Association (RDA). RDA has network of 500 volunteer groups providing horse based activities to over 25,000 people each year.

Somerset Levels RDA Carriage Driving Group provides carriage driving on Tuesdays and Thursdays from their base in Binegar. The people who come along to drive have a variety of disabilities, many are in wheelchairs and the group use a specially adapted carriage so that the driver can stay in their wheelchair for their drive. We can cater for many needs and take young people and people in their 90s! Do contact us to discuss your needs.

Benefits of carriage driving include improved self-confidence, coordination, muscle power and balance, being out and about in the open air, and a great sense of achievement.

Bi-weekly sessions cease in the winter. For general enquiries Contact: Ann Turner on **07938 563190** or **01985 215801**.

Volunteers needed! Due to Covid restrictions and the proximity to drivers when in the carriage, sessions have ceased until they can be held safely. The pony, Millie needs to be cared for 365 days a year, so if you are interested in helping with that, please contact Ann who would love to hear from you.

MID SOMERSET SHOW

www.midsomersetshow.org.uk

Plans have resumed for this year's Mid-Somerset Show on **Sunday 15 August 2021** and organisers are busy preparing for the show's return at its new home.

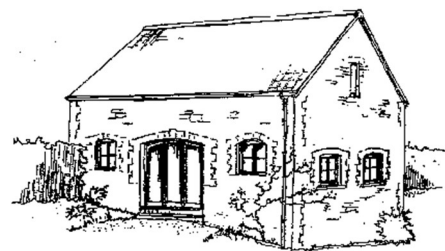


The one-day agricultural show was due to move to its new site last year, but those plans were regrettably postponed due to the COVID-19 outbreak. Building work has now begun again on the site near Cannards Grave to provide an office, large storage space, meeting room, kitchen area and better road access.

The team are now planning for the return of the show and its much-loved attractions. At the time of printing they are continuing to follow the Government's advice on events and mass gatherings and ask you to keep checking the show's website and social media pages for updates.

For more information please contact Christine Barham on **01749 938044** or secretary@midsomersetshow.org.uk.

RED TILES BARN



Come and stay in a beautifully converted century old barn set in rolling Somerset pastures.

Sleeps up to four + cot.
All modern conveniences.

Short breaks available on request.

Just on the edge of Stoney Stratton.

**For further details please contact
Richard Neill on 01934 713566**

Mobile: 07709 549721
richard@redtilesbarn.com

www.redtilesbarn.com



Rob Cockle

HANDYMAN

NO JOB TOO SMALL

**General Maintenance
and Repairs
PAT Testing**

Minor Works including
Carpentry, Painting, Fencing,
Tiling, Plumbing, Paths,
Patos, Gutters

**01749 830490
07557 942351**

Stocker Roofing Ltd

- Repairs
- Leadwork
- Guttering
- Restoration
- Tiling/Slating
- Insulation

**All work carried out comes under
our public liability insurance**

**For a free quotation or advice
Contact Jed on
07922 207577 or
jedstocker@hotmail.co.uk**

DRIFTERS Model Boat Club

All new marine modellers are welcome to join this friendly group of marine model makers, whose home water is in Shepton Mallet (Collett Park Lake). We have over 60 members nationwide, our members come from all over the country. The Shepton Mallet DRIFTERS Model Boat Club is known throughout the model boating world from France to Australia and America. We often feature in the model marine magazines. Our aim is to make model boating as pleasurable as possible. We have a number of experts on electronics, steam plant operations, radio control, modelling and wood building skills. So if you have just started, or are an expert and thinking of taking up the hobby again, you can contact:

Barrie Stevens, Chairman - **01749 343017**

Andy Hay, Club Secretary - **07999 464364**

We meet on the first Sunday of the month from 10 am to 12 noon at Collett Park Lake. **Due to Covid-19 regulations, restrictions are in place during meetings at Collett Park Lake. Before attending please contact the Club secretary.**

TAI CHI FOR BETTER HEALTH

Due to the current situation, we are currently not running the Tai Chi classes but will open again when the situation allows.

A free weekly Tai Chi Qigong class is held at the Jubilee Hall, Ditchat by qualified instructor Richard Payne, every Monday at 10.30 am. Qigong is a set of simple, gentle restorative exercises which help mobility problems, the onset of Parkinson's, improve general well-being and keep our bones and muscles working.

Contact Richard on **01749 880308**

richard.payne028@btinternet.com

COUNTERPOINT (Evercreech Singers)

We are STILL a friendly group, and we STILL dine (occasionally), wine (somewhat) and sing (lots) – 4 part unaccompanied and have been doing so for upwards of 30 years now. All notes are taught, so if you sing up here or down there or somewhere in the middle and are free 2nd and 4th Thursdays of the month, there is a place for you. If this catches your interest, do talk to Lita Buckley on **01749 831528**. Hope to see you Soon!

NEW CONTRIBUTORS

Do you run a club or group or provide a service that is not mentioned here? Do you have an event you would like to be included in the EDIS diary? If so contact the EDIS team by 13 September 2021.

CASTLE CARY CHOIRwww.castlecarychoir.org

Castle Cary choir members are still “Zooming” to rehearsals on Mondays at 7.30 pm and enjoyed a “virtual” Christmas concert, with guest stars Tom and Millie Toomey along with readings from choir members, which was joined by our members both old and new and from all parts of the country.

Members of the choir have been remarkable with average attendance in the order of 35 per week – it has been really important to keep up the community spirit and it is lovely to see all the smiling faces and of course there’s been opportunity for a chat both before and after the rehearsal - vaccinations has featured widely in these discussions!

We hope to get back to meeting and rehearsing together in September and already have a couple of Christmas concerts lined up and a special “Welcome Back to Normality” concert with guest stars on 29 October for people in Castle Cary and surrounding areas so watch this space!

If your organisation would like us to come and sing for you we would love to hear from you so do contact our secretary on the number below.

If your usual choir has not been able to rehearse during the pandemic and you would like to join us check out our website or contact our secretary John Roberts **07970 039007**.

MOBILE HAIR DESIGN
with
SHARON

Professional hairdressing in
the comfort of your own home

**PERMS, COLOURS,
HIGHLIGHTS,
LOWLIGHTS, CUTS,
BLOW DRYS,
SHAMPOO & SETS**

Tel: 01749 347186
Mobile: 07988 725648

EVERCREECH FOODSAVING PROJECT

The Evercreech Foodsaving Project is an environmentally-based village group, which saves good food that is being thrown away and shares it out to people who can use it. With the support of Evercreech Village Hall, volunteers collect unsold food around 8 pm every night from the Co-op, divide it into bags and then deliver it to households in the village.

It is on its best-before or use-by date on the day we deliver, but can still be used or frozen – and saved! Sometimes food also comes from people with a glut in their gardens, as well as other sources.

Everyone is welcome to be involved by using up a bag of food (which may contain bakery or deli items, fruit or vegetables, meat or other items).

Please contact Jenny to be added to the delivery rota (via our local councillor Barry O’Leary on **01749 321 421**).

New volunteers to help deliver are also always welcome!

EDIS VOLUNTEERS

The EDIS Team would like to recruit more volunteers. If you can spare some time twice a year to work with us and have basic IT skills, please contact us on **01749 831069** to find out more.

COVID-19 UPDATES

National updates can be found at:
www.gov.uk/coronavirus

More local updates are available from Somerset County Council at:

www.somerset.gov.uk/coronavirus/latest-coronavirus-updates/



And from Mendip District Council where updates and sources of support and helpful information can also be found. Go to:

www.mendip.gov.uk/article/8771/COVID-19-Information-and-Guidance-for-Residents

EVERCREECH PARISH COUNCIL

It has been as frustrating a year for the council as for everyone else, with all meetings having to be by Zoom. Thanks to the support of fellow councillors and the Clerk, we have kept business going.

We were delighted to welcome two new councillors, Michael Muncer and Garry Langwith, and are looking forward to their input and fresh insight. We also welcomed a new street cleaner - Mary-Lou Poore, who has been highly visible around the village, and is doing a fine job keeping the village shipshape. I hope we can all help out by picking up our litter, in particular dog mess, and using the bins provided.

The play area at Queen's Road playing fields has been well used since reopening, but we are still hoping for the resumption of sport at Weston Town. Since last year, though, the skatepark has deteriorated to a point where it had to be closed, and the repairs needed are uneconomic. The council have decided to remove the skatepark and examine replacement options, so we shall be asking interested groups for their views. One suggestion has been to move the skatepark to Queen's Road. If you have any ideas or opinions on its future, please let the council know.

The future of the former Greencore site is still unknown. At time of writing we are promised a new application to consider, so we wait to see what, if any of the councils requests are included.

We were saddened that our request to the County Council for new signage for HGV movement was turned down. Lorries in the village remain a major nuisance, so we have put some monies aside and will be approaching local businesses for help, as proper traffic movement is of benefit to us all.

The old telephone box in Prestleigh Road has been purchased from BT and is going to be loaned to the WI for use as a bookswap. A brilliant idea, and thanks to them for the suggestion.

With the approach of summer, we shall again leave part of Queen's Road as a wildflower area and not cut it; discussions continue with the Cricket Club on the future of their pavilion, and we shall be out and about painting and repairing benches and other assets.

We are hoping to resume normality in the Village Hall for the monthly meeting on the 1 June. Meetings are always on the first Tuesday of each month and the public are very welcome. There is an open session at the beginning to put your questions and comments to the council. Further details are always on the Council's website: **www.evercreech-pc.gov.uk**

I must give a big thank you to all my fellow councillors who have been supportive through this difficult time, and all in our community who make Evercreech such a happy place to live.

Keep well, and here's hoping for a normal and enjoyable summer!

Rob Reed (Chair, Evercreech Parish Council)

The Glen

Situated in the peaceful village of Evercreech, The Glen is a friendly care home, offering nursing and residential care to elderly ladies and gentlemen.

Choosing a care home for yourself, an elderly friend or loved one is one of the hardest decisions you'll make.

Our welcoming care home offers a home-from-home where older people receive the care they need and the support they want to continue to live their life with dignity and choice.

Whether it is a little care break or a longer term care package you need, we'll most likely have the perfect solution.

With kindness and compassion at the heart of everything we do, our Residents will be guaranteed a warm and affectionate stay.

- Little break – short term care break
- Home from home – long term care and residence
- Delicious home cooked meals
- Regular activities and wellbeing programme

To find more information on the care we can offer you or your loved one, please visit our website or contact our dedicated Careline.



W hc-one.co.uk
T 0333 321 4714
E careline@hc-one.co.uk
A Shapway Lane, Evercreech, Shepton Mallet, BA4 6JS







Hi everyone,

Over the last year we have all learnt a lot about ourselves and the supportive, often spontaneous, network of those around us locally - right where we all live. A year on from the first days of lockdown I want to say a big **'thank you' to everyone who has kept our community safe** and supplied with essentials over the last twelve months. Many people who would usually work for Mendip District Council have been redeployed to work locally on the COVID-19 vaccination programme. I would like to congratulate not only them but also everyone involved in the home-schooling effort; parents, grandparents and carers who have been supporting their children while also dealing with the pressure from their own work or indeed lack of work; the teaching and support staff of the schools and of course the young people themselves, who have shown such resilience and determination to continue to learn.

I was one of the many thousands of people made redundant in the summer of 2020 because of the pandemic and I know first-hand how difficult dealing with financial uncertainty or job insecurity can be. It was a tough time and unfortunately so many villagers have similar stories - Coronavirus has impacted all of us in one way or another. However, **I am utterly determined to help give residents the support they deserve**. That is why one of my very first acts was to significantly extend the financial support available to low, or no-income households. I am proud we have doubled the financial support available, compared with 5 years ago. I have produced a booklet called 'Know Where you Stand', detailing how best to access this support and further reduce your council tax using exemptions. You can find the leaflet here: <https://barryoleary.mycouncillor.org.uk/2021/03/22/council-tax-help>. Once again if you do need help, please get in touch, you know **I am here to help you**.

I have also been concerned at the ever widening 'digital divide'. To me it is clear many people just do not have access to the right technology for their 21st century lives. I wanted to help, and working with partners have set up 'Tech Together', a local tech access scheme, with 250 laptops now donated. I have personally collected 50 already and seen the first computers sent straight down to Evercreech Primary. I am keen to see the **additional donations going to help out young learners**. If you need a laptop to support your own or your child's learning or if you have something to donate, be assured we still need you! Please see below for contact details.

I promised to feedback to the community when I heard more regarding the ex-Greencore factory site. I stood by those who have argued these local heritage buildings must be saved and always said this was possible. I have received notification of a proposed retention from the site owner's adviser, but of course, 'the devil is in the detail'. **I will be organising another virtual 'Community Chat' village meeting** on this topic once the emerging proposals are clearer. **I am also happy to help you and put forward your questions** too. I cannot yet say Kamps Mill is fully secure but personally welcome these recent changes as the start of a move in the right direction.

| What are Mendips Responsibilities? | | What has Barry done ? |
|---|--|---|
|  | Holding Somerset Waste Partnership to account, listening & resolving your home collection problems | I was pleased the Council held an emergency scrutiny meeting with the Somerset Waste Partnership. I raised not just the missed collections, but the importance tackling the rural litter problem . It is clear more needs to be done. |
|  | Supporting local small business establishing a Mendip Recover, Restart & Grow programme | Helping our local businesses get insights, expertise and a mix of support, ideas and connections to help grow back better. Click www.mendip.gov.uk/businessgrants for the latest grant and support information. |
|  | Ending harmful daily emissions, especially in Victoria Square right at the heart of our village | I have worked to ensure 'No idling' signs are installed at the Co-op, Village Hall, & Primary School. The school 'drop-off' area is now clearly signed as a ' No Idle Zone ' – protecting young learners, parents, and residents' lungs. |
|  | Planting 500+ trees locally the Mendip Hills Area of Natural Beauty & pleased to report more coming later this year! | In addition to helping alleviate tree loss due to ash dieback disease in the Mendip Hills, it addresses Climate Change by increasing the carbon absorption potential . This is action right where we live , it also helps relieve localised flooding. Positive local change, making life better for everyone. |

Please - stay safe, look after yourself and those around you.

Barry, Your Mendip Councillor,  here for you.

Cllr. Barry O'Leary

Tel 01749 321 421 email: evercreech.barry@icloud.com

Social Media www.facebook.com/evercreech.barry/ Website www.barryoleary.mycouncillor.org.uk/

EVERCREECH VILLAGE HALL**www.evercreechvillagehall.org.uk/***Charity Number 304538*

| | | |
|----------------|------------------|---|
| Chair: | Mollie Purse MBE | Tel: 830166 |
| Secretary: | Marion Covens | Tel: 830239 |
| Treasurer: | Richard Kewish | Tel: 830665 |
| Hall Bookings: | Janet Rundle | Tel: 830800 or evercreechvh@gmail.com |

We are seeing light at the end of tunnel and we are now looking forward to re-opening the Hall, albeit gradually.

We will be able to open to controlled groups (members only) from **Monday 17 May** but everyone will still need to socially distance and use the sanitisers/anti-viral spray provided. However, we hope you will agree that will be a small price to pay for being able to meet again which we haven't been able to do since March 2020. We will arrange for the halls to be 'fogged' prior to opening using the latest machine and disinfectants. Fogging is more intense than normal cleaning as it disinfects and covers all surfaces.

Because we were forced to close from last March with only very limited use for a couple of months, we qualified for Government grants that were available from Mendip District Council. The receipt of these grants has more than covered our expenditure over those months and we find ourselves with a surplus that we would like to share with our hirers. Therefore, we are offering BOGOF hire fees (Buy One Get One Free) to all our regular local users (not commercial users) and anticipate that we will be able to sustain this for a year. As everyone has suffered from limited incoming funds, we hope that this will help our local groups get back on their feet and enjoy meeting up again.

Subject to no further changes of date from the Government, we will be able to fully open the Hall to everyone from **Monday 21 June** and want to celebrate this event with the village. Therefore, on **Saturday, 3 July** we will be throwing open our doors from 2 pm to 5 pm and inviting everyone to come in and have tea/coffee and cake with us free of charge.

Following the celebration tea, Evercreech Films will be showing a film in the evening. They are currently sourcing a film and will publicise times etc., in due course. There will be no charge for entry but tickets **must** be booked in advance either by emailing **evercreechfilms@gmail.com** or calling/texting **07765 892004**. Refreshments will also be free of charge during the evening and everyone attending will be entitled to one free drink.

Thank you to everyone who uses and supports the Hall. We are always open to suggestions from you on what you would like from the Hall and any improvements you would like to see made. Please contact anyone on the above list and your idea will be discussed in committee and, if practical, implemented. Also, do please contact me if you would like to join our lively and committed committee.

Marion Covens, Secretary to the Trustees

EVERCREECH IN BLOOM

I am temporarily deputising for my colleague Alison Partridge, who is recovering after a fall in her home. She is a determined lady and her convalescence is proceeding apace.

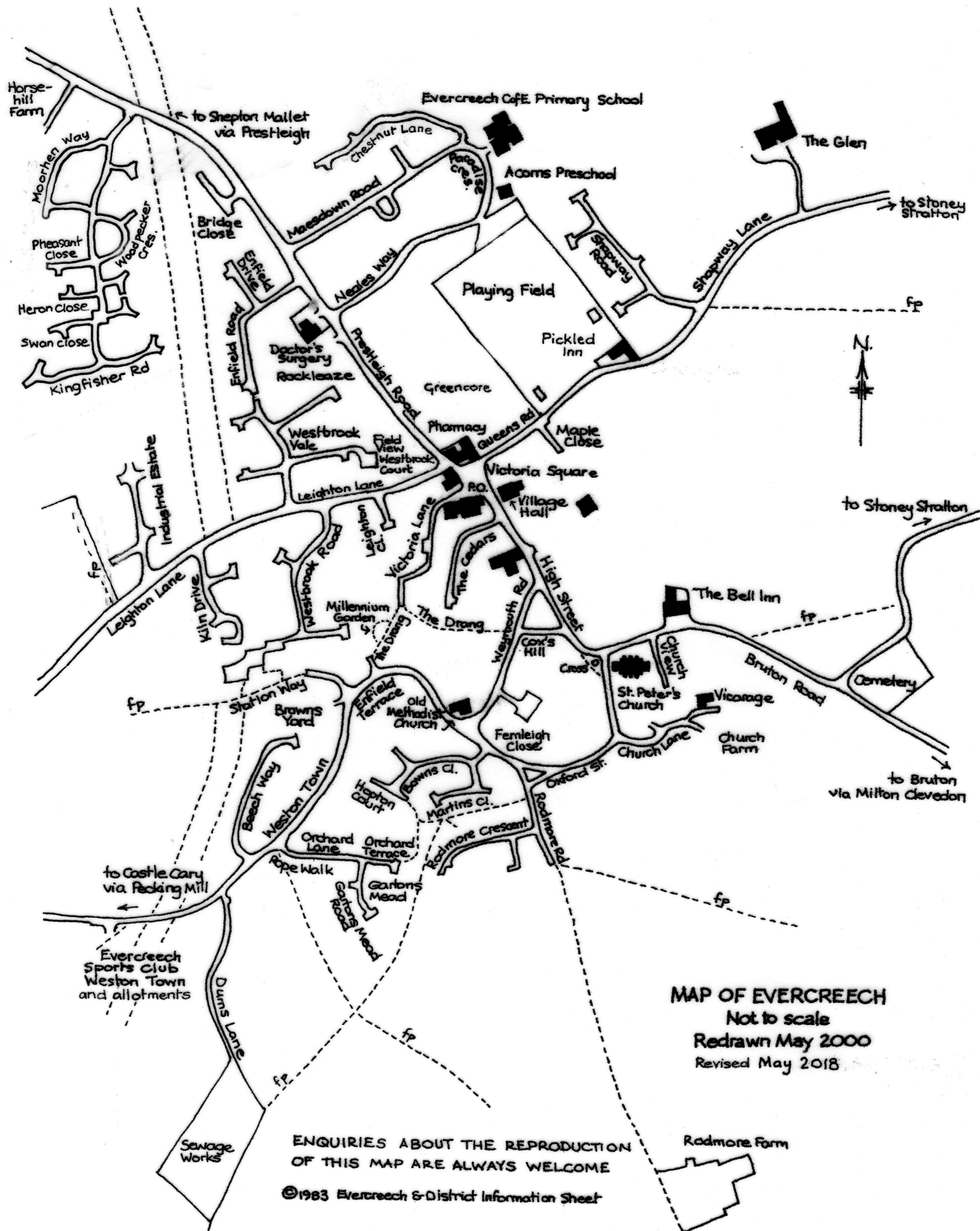
Looking forward to the coming Summer season, with Spring already beautifully evident, we will be reliant on volunteers coming forward to 'take charge' of compact and specific areas, as they kindly did last year. Perhaps if you were amongst those who lent a hand in 2020, you could contact me to let me know if you are willing to help again this year. I think the village looked great during the flowering season and hopefully we can repeat that in 2021. Areas in particular that we struggle with are the grass cutting and planters around the bus stop in Prestleigh Road, and the baskets on the railings around Church Square, to name just a couple. Already we have had a generous offer to plant the containers outside the factory. If you have a small area in mind that you feel could do with a bit of TLC perhaps you could offer to look after it. We have a small amount of cash to reimburse the cost of plants and we will provide compost free of charge if requested.

We are fortunate in once again having, thanks to the generosity of the Parish Council, an effective and industrious road sweeper which minimises the accumulation of litter.

Despite the reality that there are no longer any 'Best Kept Village' prizes, I think it has always been acknowledged that we are a community that takes pride in the appearance of Evercreech. It's a team effort and I sincerely urge you to join 'The Team'.

Contact me on **01749 830166**, Mobile **07980 001353**, or email **molliepurse@aol.com** Thank you!

Mollie Purse, MBE



MAP OF EVERCREECH

Not to scale

Redrawn May 2000

Revised May 2018

ENQUIRIES ABOUT THE REPRODUCTION
OF THIS MAP ARE ALWAYS WELCOME

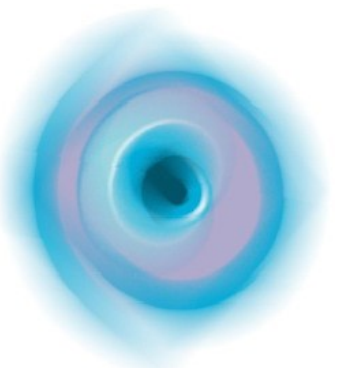
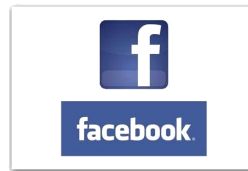
©1983 Evercreech & District Information Sheet

PITHER'S YARD Natural Health Clinic

High Street, Castle Cary, BA7 7AN

01963 350405/07891 747 239

www.pithersyardclinic.co.uk



Appointments available Days/Evenings/Weekends

ACUPUNCTURE

Traditional Chinese Medicine

Acupuncture can be used for a wide range of problems.

Jennifer has a wide range of experience in working with drug rehabilitation, fertility problems and preparation for IVF and has a full understanding of musculo-skeletal problems and injuries, having worked with osteopaths and Pilates teachers

Excellent in helping to reduce inflammation

Facial Rejuvenation

Helping with signs of ageing

Speak to Jennifer to find out more.

SPORTS MASSAGE

May help with

Flexibility and range of motion

Greater mobility

Relief to tight and painful muscles

Improve long term injuries

All round sports performance

Stress and tension

Office based problems

And much more...

CHIROPRACTIC

McTimoney

This treatment is effective and gentle with no cracking or crunching action. Each area of problem is dealt with individually and not as a whole and so no rapid twisting or cracking takes place.

May help with short and long term problems

Sciatica

Back/neck/hip pain

Pain in arms/ pins & needles and much more

Bill Fayers

BOWEN TECHNIQUE

With John Wilks MA RCST BTAA

Gentle, calming treatments for:

Back Pain

Digestive Bowel Problems

Frozen shoulder

Headaches

Tennis Elbow

Muscle Aches and Sprains

Repetitive Sprain Injuries.

Short courses of treatments available

Contact John on: 07866 764 960

THE TREATMENTS WE OFFER

MAY HELP WITH:

Stress and its related conditions, fatigue, aches, pins, flexibility, backache, headaches and migraine, IVF preparation, support through cancer treatment, long term injuries, sports related injuries, menstrual cycle, emotional problems, TMJ, addictions, impotence, food intolerances, allergies, mobility problems, sciatica, stop smoking, musculo-skeletal problems, insomnia, fertility, hormonal and teenage problems and much more

INDIAN HEAD

MASSAGE

Great for headache and migraine sufferers

A wonderful stress buster

Deeply relaxing

Stress and tension held in the shoulders, neck and head/face melt away.

£30

Or 2x treatments £52

Craniosacral Therapy

Babies, toddlers and teenagers

May help common new parent problems such as Reflux and feeding problems

Sleep patterns

Torticollis (wry neck)

Toddlers and Teenagers

May help with

Behavioral, social learning difficulties

Emotional issues such as anger

It supports physical and emotional needs.

John Wilks MA RCTS BTAA

07866 764 960

PREGNANCY MASSAGE

For Mum and Baby

This massage gives support through pregnancy.

It may help with a number of pregnancy issues such as circulation, oedema, muscle tension, constipation, emotional stress, breathing

Helps with relaxation for mum and baby.

This massage was devised by midwives and therapists to give the best treatment and support.

RELAX AND UNWIND

With

REFLEXOLOGY

MASSAGE

HOT STONE MASSAGE

BELLABACI CUPPING MASSAGE

THERAPY

BELLABACI FACIAL MASSAGE

Melt away the stresses of modern day living.

May help with stress, depression and may help you when over-faced by problems.



THE BELL INN EVERCREECH

Our doors are now open with social distancing measures and new guidelines in place as instructed by the Government.

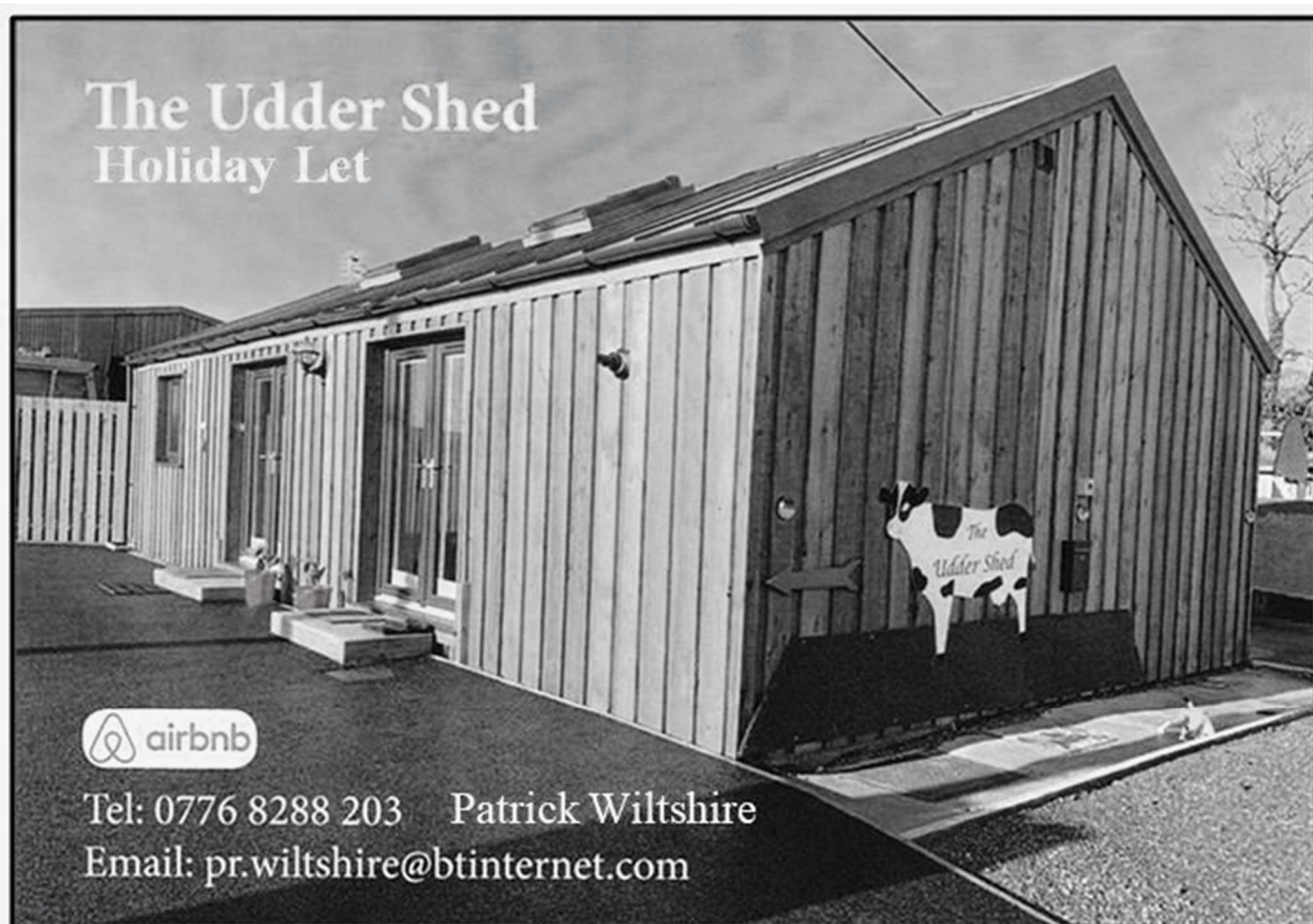
Please CALL AHEAD of your visit to check available space as there will be reduced capacity inside the pub.

For full information please check our website.

Dean & Anna Clarke, The Bell Inn, Bruton Road, Evercreech BA46HY

01749 830287 bellevercreech@aol.com

www.bellinnevercreech.co.uk





Osborne

TREE SERVICES

**Specialising in all
aspects of tree
surgery including:**

- Tree shaping,
pollarding and felling
- Hedge trimming
- Stump removal
- Garden clearance

Fully insured
NPTC qualified.

National Certificate in
Arboriculture

Osbornetreeservices@hotmail.co.uk

Telephone - 07896 813 934

Melita Coiffure

joined by

Hair @ Melita Coiffure



Barbara, Tanya, Zee
warmly welcome you to the salon
for all aspects of hairdressing.
CLOSED on MONDAYS and SATURDAYS

Oxford Street
Evercreech, BA4 6HT

01749 830536

Re-pointing Somerset.co.uk

Lime Re-pointing Specialist



Matthew Rawlingson Plant, Mill on the Brue: *"Tom and his team are considerate, hard working and take great pride in their work. I would not hesitate to recommend him."*

Thomas Kenrick 01749 831568 07746 218062 www.repointingsomerset.co.uk



Independent provider of specialist neurological rehabilitation for adults across Somerset and surrounding areas.

Intensive residential rehabilitation and outpatient community services.

Access to the latest in neurotechnology with the **ReWalk exoskeleton, FES** and much more.

- Physiotherapy
- Speech and Language Therapy
- Occupational Therapy
- Neuropsychology
- Post Covid-19 rehabilitation
- Vestibular rehabilitation
- Post Concussion Syndrome service
- Specialist spinal cord injury service
- Orthotics and FES
- Sports and MSK injuries
- 2 bedroom flat with full wheelchair access

The Hobbs Team are so professional and are always happy to go the extra mile, they have made a huge difference to my life.

Laughing Patch, Evercreech Junction, Southwood, Shepton Mallet, Somerset BA4 6NA
01749 860488 email: hobbssw@hobbsrehabilitation.co.uk
www.hobbsrehabilitation.co.uk



SPRINGFIELD COTTAGES

Two tastefully converted 3-bedroomed self-catering cottages.

Suitable for Wheel Chair Access

Close to Bath & West Showground.

**Available for bookings
throughout the year.**

Short breaks negotiable.

For more details contact:

Pat Allen Tel: 01749 830748

www.springfieldcottages.com

N S Garden Services

Telephone: **07842 359146**

Email: nicksmith1967@outlook.com

- * Lawns cut, returfed, seeded
- * Hedge Trimming, Tree Pruning
- * Plant and weed control
- * Garden Clearance/Tidying
- * Fence erection and Repairs
- * Pressure washing Patios and Driveways

- * Logs by the Load or Half Load
- * Netted Logs
- * Kindling
- * Coal
- * **Free Delivery**



THE TYRE SHED



New and Part Worn Tyres

Punctures & Balancing

New tyres,
most major brands supplied

Competitive prices on
new budget tyres

Open Monday to Friday
from 8.00 am to 5.30 pm

Saturday Opening:
8.00 am – 12 noon

Tel: 01749 342606

Mob: 07974 769523

Proprietor: Hugh Cridland
Maytree Farm · Cannards Grave ·
Shepton Mallet · Somerset · BA4 4LY

Domestic Appliance Rescue

REPAIRS of
Electric Ovens,
Washing Machines,
Tumble Driers &
Dishwashers



Martin Davidson
Electrical & Electronics Engineer

078 5000 1974




WELLS FUNERAL SERVICES
Professional Focused – Service Driven

Your Local Award-Winning Funeral Director!

Funeral Services and Arrangements

- Funeral Services & Arrangements
- Affordable Funeral Packages
- Bespoke Funeral Packages
- Funeral Plans

Our Introduced Services

- Will Writing Service
- Simple Wills or Complex Wills
- Protective Property Trusts
- Lasting Powers of Attorney
- Living Wills - Advance Directives
- Inheritance Tax Mitigation service
- Fixed Fee Probate Services

What our customers say:

"Wells Funeral Services were astounding in every way. At every step of the process, Rod and his team guided us through this difficult time with compassion and professionalism. Nothing was too much trouble ... the best send off we could have given her."

- Lesley & Keith G.



www.wellsfuneralservices.co.uk



COMPLETE
FUNERAL SERVICES
FROM ONLY
£1,499

COMPLETE
FUNERALS PLANS
FROM ONLY
£1,499

CALL ROD MAJOR ON
01749 670 100
OR EMAIL
ROD@WFS.ME.UK

Carpet & Upholstery Steam Cleaning



- Powerful Van Mounted Equipment
- Residential & Commercial Cleaning
- Pre and End of Tenancy Cleaning
- Stains & Pet Odour Removal
- No VAT
- Small Family Business

~ ~ ~ *A carpet cleaner you can trust!*

Call Sally

Mobile: 07766117219

Tel: 01749 440011

www.stainaway.co.uk





Mendip Performing Arts Academy



The Mendip Performing Arts Academy launches on
Saturday, April 24th

A new Saturday theatre and performing arts school for children
aged 5- 16, based at the Evercreech Village Hall.

Prospective students are welcome to join us for a trial session
for just £5.

Please email MendipPerformingArts@Gmail.com to enquire.
Booking is essential.

www.MendipPerformingArtsAcademy.co.uk



MENDIP GOURMET GRAZING

Carefully curated luxury sweet and savoury grazing boxes.

Free collection or delivery in Evercreech. Small delivery charge within a ten-mile radius.

The luxury classic savoury box is created with the finest local and British cheese,
charcuterie, fresh fruit and accompanying artisan nibbles. £35

The Luxury sweet afternoon tea box is the best cream tea you will ever have!
Scones, cream, jam and a selection of sweet delights. £25

A lovely gift or treat ... Just because.

We can also cater for small gatherings and events.

Contact MendipGourmetGrazing@gmail.com to enquire.

www.MendipGourmetGrazing.co.uk



Chinnock Taxis



Airports
Seaports
Railway Stations

£10 million public liability
IAM Certificate Holder

Shopping
Daily Hire
Tours

Tony Chinnock

Phone: 07703 068878

www.chinnocktaxis.com

3 Solutions⁽²⁰¹¹⁾ Ltd

For all aspects of property maintenance



Plumbing - Roofing - Heating - Carpentry - Electrical - UPVC Windows & Doors

t 01749 344155 www.3solutionsltd.co.uk

Three Winds | Downside | Shepton Mallet | Somerset | BA4 4FH



D.R.CARPETS

Showroom 1, Evercreech Junction, Shepton Mallet, Somerset BA4 6NA Telephone & Fax: 01749 831578



Open 6 days a week

Large Displays of Carpets and Vinyl
Laminate and Wood Flooring
Safety Flooring
Rubber Workshop/Horsebox Matting
Selection of Natural Coir, Sisal and Seagrass
Entrance Matting and Doormats
Artificial Grass and other Novelty Flooring
Leftovers/Remnants made into Rugs/Mats/Runners



Commercial and Domestic

Supplied and Fitted

Find us on the A371
Between Shepton Mallet and Castle Cary



BATH & WEST COUNTRY FESTIVAL

27 - 29 AUGUST 2021

SPECIAL EVERCREECH TICKET PRICE

2 TICKETS FOR £24

Complete the enclosed form & bring it to the Bath & West Society Office at the Showground to claim your tickets. Available from 1 July 2021

